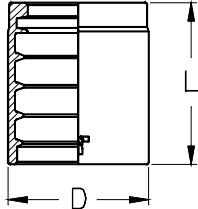
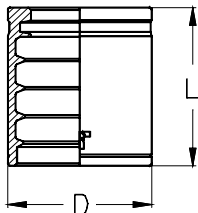


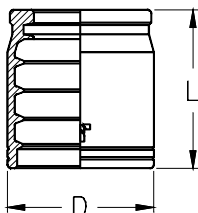


**NO SKIVE**
**HSC**
**SWAGED NON SKIVE FERRULE**  
*BOCCOLA A PRESSARE NON SKIVE*


TIEFFE Part. N°	Hose I.D. Ø Interno tubo			Dimensions (mm)		Applications Applicazioni					
	DN	SIZE	Inch	D	L						
HSC04	6	04	1/4"	19	23	1SC					
HSC05	8	05	5/16"	20	27,5	1SC					
HSC06	10	06	3/8"	23	30	1SC					
HSC08	12	08	1/2"	26,5	32	1SC					
HSC10	16	10	5/8"	29	35	1SC					
HSC12	19	12	3/4"	33	34	1SC					
HSC16	25	16	1"	42	45	1SC					

**NO SKIVE**
**HXT1**
**SWAGED NON SKIVE FERRULE**  
*BOCCOLA A PRESSARE NON SKIVE*


TIEFFE Part. N°	Hose I.D. Ø Interno tubo			Dimensions (mm)		Applications Applicazioni					
	DN	SIZE	Inch	D	L						
HXT103	5	03	3/16"	19	24	1SN	R1AT				
HXT104	6	04	1/4"	20	27	1SN	R1AT	2SC			
HXT105	8	05	5/16"	22	27,5	1SN	R1AT	2SC			
HXT106	10	06	3/8"	24,5	30	1SN	R1AT	2SC			
HXT108	12	08	1/2"	28	32,5	1SN	R1AT	2SC			
HXT110	16	10	5/8"	32	35	1SN	R1AT	2SC			
HXT112	19	12	3/4"	36	40	1SN	R1AT	2SC			
HXT116	25	16	1"	45	50	1SN	R1AT	2SC			
HXT120	31	20	1 1/4"	54	50	1SN	R1AT				
HXT124	38	24	1 1/2"	62	55	1SN	R1AT				
HXT132	51	32	2"	76	60	1SN	R1AT				

**NO SKIVE**
**HXT**
**SWAGED NON SKIVE FERRULE**  
*BOCCOLA A PRESSARE NON SKIVE*


TIEFFE Part. N°	Hose I.D. Ø Interno tubo			Dimensions (mm)		Applications Applicazioni					
	DN	SIZE	Inch	D	L						
HXT03	5	03	3/16"	20	24	2SN	R2AT				
HXT04	6	04	1/4"	22	26	2SN	R2AT	1SN	R1AT	2SC	
HXT05	8	05	5/16"	24	27,5	2SN	R2AT	1SN	R1AT	2SC	
HXT06	10	06	3/8"	26	30	2SN	R2AT	1SN	R1AT	2SC	
HXT08	12	08	1/2"	30	32,5	2SN	R2AT	1SN	R1AT	2SC	
HXT10	16	10	5/8"	34	35	2SN	R2AT	1SN	R1AT	2SC	
HXT12	19	12	3/4"	38	40	2SN	R2AT	1SN	R1AT	2SC	
HXT16	25	16	1"	48	50	2SN	R2AT				
HXT20	31	20	1 1/4"	60	57	2SN	R2AT				
HXT24	38	24	1 1/2"	67	62	2SN	R2AT				
HXT32	51	32	2"	80	66	2SN	R2AT				

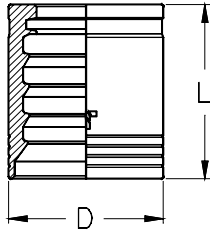
For SAE100 R16 - SAE100 R17 and other compact braided hoses applications, contact TIEFFE.

Voor toepassing van SAE100 R16-SAE100 R17slang neem contact op met FLEXTUBO

**SCHILLEN**

**H4..**

**SWAGED SKIVE FERRULE  
SCHILHULS OM TE PERSEN**

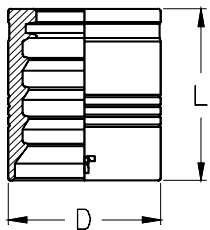


TIEFFE Part. N°	Hose I.D. Ø Interno tubo			Dimensions (mm)		Applications Toepassing						
	DN	SIZE	Inch	D	L							
H404	6	04	1/4"	22	30	4SP	R9R**					
H406	10	06	3/8"	26	32,5	4SP	R9R**		R12	2ST	R2A	
H408	12	08	1/2"	30	35	4SP	R9R**		R12	2ST	R2A	
H410	16	10	5/8"	34	38,5	4SP	R9R**		R12	2ST	R2A	
H412	19	12	3/4"	38	43,5	4SP	R9R**	4SH**	R12	2ST	R2A	
H416	25	16	1"	46	54	4SP	R9R**	4SH**	R12	2ST	R2A	
H420	31	20	1 1/4"	56	61	4SP			R12	2ST	R2A	
H424	38	24	1 1/2"	65	68	4SP			R12	2ST	R2A	
H432	51	32	2"	78	74	4SP						

**SCHILLEN**

**BXSH**

**SWAGED SKIVE FERRULE  
SCHILHULS OM TE PERSEN**



TIEFFE Part. N°	Hose I.D. Ø Interno tubo			Dimensions (mm)		Applications Toepassing						
	DN	SIZE	Inch	D	L							
H6SH20	31	20	1 1/4"	54	61		R9R**	4SH**				
H6SH24	38	24	1 1/2"	62	69		R9R**	4SH**				
H6SH32	51	32	2"	76	74		R9R**	4SH**	R12	2ST	R2A	

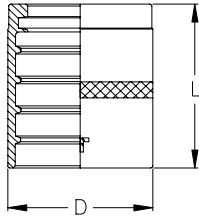
\*\* The application of "CX" series hose connectors must be limited to the "DIN856 4SP" maximum working pressure.

De toepassing van de CX serie moet beperkt blijven tot "DIN 856 4SP"

**NIET SCHILLEN**

**H7**

**SWAGED NON SKIVE FERRULE**  
**Pershuls niet schillen**

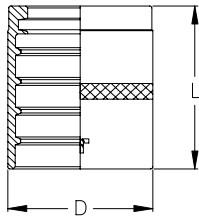


TIEFFE Part. N°	Hose I.D. Ø Interno tubo			Dimensions (mm)		Applications Applicazioni				
	DN	SIZE	Inch	D	L					
H703	5	03	3/16"	15,0	26,0		R7	R8		
H704	6	04	1/4"	17,0	29,0		R7	R8		
H705	8	05	5/16"	20,0	30,5		R6	R7	R8	
H706	10	06	3/8"	22,0	32,0		R6	R7	R8	
H708	12	08	1/2"	27,0	32,5		R6	R7	R8	
H710	16	10	5/8"	31,0	37,0		R6	R7	R8	
H712	20	12	3/4"	34,5	41,0		R6	R7	R8	
H716	25	16	1"	40,0	50,0		R6	R7		

**NIET SCHILLEN**

**H8**

**SWAGED NON SKIVE FERRULE**  
**Pershuls niet schillen**

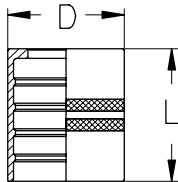


TIEFFE Part. N°	Hose I.D. Ø Interno tubo			Dimensions (mm)		Applications Applicazioni				
	DN	SIZE	Inch	D	L					
H816	25	16	1"	43,0	52,0			R8		

**NIET SCHILLEN**

**H3**

**SWAGED NON SKIVE FERRULE**  
**Pershuls niet schillen**

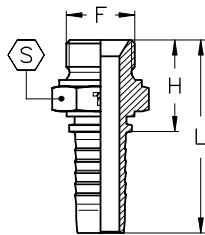


TIEFFE Part. N°	Hose I.D. Ø Interno tubo			Dimensions (mm)		Applications Applicazioni				
	DN	SIZE	Inch	D	L					
H304	6	04	1/4"	19,0	29,0	R3				
H305	8	05	5/16"	22,0	30,0	R3				
H306	10	06	3/8"	24,0	31,0	R3				
H308	12	08	1/2"	28,5	34,0	R3				
H310	16	10	5/8"	32,0	36,0	R3				
H312	20	12	3/4"	38,0	42,0	R3				
H316	25	16	1"	46,0	50,0	R3				
H320	32	20	1 1/4"	52,0	57,0	R3				

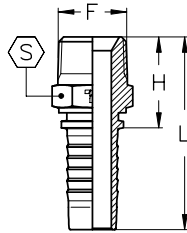
BS 5200

AGR

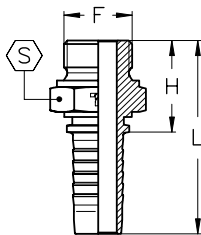
**BSP PARALLEL MALE - 60° CONE SEAT**  
MASCHIO GAS (BSP) CILINDRICO - SVASATO 60°



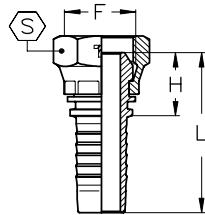
TIEFFE Part.N.	Hose I.D. Ø interno tubo			Thread Filettatura	Dimensions (mm)					Maximum W.P.	
	DN	Size	Inch	F	H	L	S		bar	PSI	
XBM0203	5	03	3/16"	1/8"-28	20	45	14		415	6000	
XBM0403	5	03	3/16"	1/4"-19	24	49	19		415	6000	
XBM0204	6	04	1/4"	1/8"-28	20	48	14		415	6000	
XBM0404	6	04	1/4"	1/4"-19	25	53	19		450	6500	
XBM0604	6	04	1/4"	3/8"-19	27	55	22		450	6500	
XBM0804	6	04	1/4"	1/2"-14	32	60	27		450	6500	
XBM0405	8	05	5/16"	1/4"-19	25	53	19		350	5000	
XBM0605	8	05	5/16"	3/8"-19	27	55	22		350	5000	
XBM0805	8	05	5/16"	1/2"-14	32	60	27		350	5000	
XBM0406	10	06	3/8"	1/4"-19	25	55	19		450	6500	
XBM0606	10	06	3/8"	3/8"-19	27	58	22		450	6500	
XBM0806	10	06	3/8"	1/2"-14	32	62	27		450	6500	
XBM0608	12	08	1/2"	3/8"-19	28	61	22		415	6000	
XBM0808	12	08	1/2"	1/2"-14	33	66	27		415	6000	
XBM1008	12	08	1/2"	5/8"-14	35	68	30		415	6000	
XBM1208	12	08	1/2"	3/4"-14	36	69	32		415	6000	
XBM1008	16	10	5/8"	1/2"-14	33	69	27		350	5000	
XBM1010	16	10	5/8"	5/8"-14	35	71	30		350	5000	
XBM1210	16	10	5/8"	3/4"-14	36	72	32		350	5000	
XBM0812	20	12	3/4"	1/2"-14	34	74	27		350	5000	
XBM1012	20	12	3/4"	5/8"-14	36	76	30		350	5000	
XBM1212	20	12	3/4"	3/4"-14	37	77	32		350	5000	
XBM1612	20	12	3/4"	1"-11	42	82	41		350	5000	
XBM1216	25	16	1"	3/4"-14	38	89	32		280	4000	
XBM1616	25	16	1"	1"-11	43	94	41		280	4000	
XBM2016	25	16	1"	1 1/4"-11	46	97	50		280	4000	
XBM2020	32	20	1 1/4"	1 1/4"-11	47	105	50		210	3000	
XBM2420	32	20	1 1/4"	1 1/2"-11	50	108	55		210	3000	
XBM2424	40	24	1 1/2"	1 1/2"-11	50	115	55		185	2700	
XBM3224	40	24	1 1/2"	2"-11	55	119	70		185	2700	
XBM3232	50	32	2"	2"-11	56	126	70		165	2400	

**BSP TAPS**
**AGR-K**
**BSP TAPER MALE - 60° CONE SEAT**  
 BSP TAPS TOELOPENDE BU.DR. - 60° CONUS


TIEFFE Part.N.	Hose I.D. Ø interno tubo			Thread Filettatura F	Dimensions (mm)					Maximum W.P.	
	DN	Size	Inch		H	L	S	bar	PSI		
XBT0203	5	03	3/16"	1/8"-28	20	45	12			415	6000
XBT0403	5	03	3/16"	1/4"-19	25	50	15			415	6000
XBT0204	6	04	1/4"	1/8"-28	21	49	12			450	6500
XBT0404	6	04	1/4"	1/4"-19	25	53	15			450	6500
XBT0604	6	04	1/4"	3/8"-19	26	54	19			450	6500
XBT0405	8	05	5/16"	1/4"-19	25	53	15			350	5000
XBT0605	8	05	5/16"	3/8"-19	26	54	19			350	5000
XBT0406	10	06	3/8"	1/4"-19	26	56	15			450	6500
XBT0606	10	06	3/8"	3/8"-19	27	57	19			450	6500
XBT0806	10	06	3/8"	1/2"-14	32	63	22			415	6000
XBT0608	12	08	1/2"	3/8"-19	28	64	19			415	6000
XBT0808	12	08	1/2"	1/2"-14	33	66	22			415	6000
XBT0810	16	10	5/8"	1/2"-14	33	69	22			350	5000
XBT1210	16	10	5/8"	3/4"-14	35	71	27			350	5000
XBT1212	20	12	3/4"	3/4"-14	36	77	27			350	5000
XBT1612	20	12	3/4"	1"-11	41	82	36			280	4000
XBT1616	25	16	1"	1"-11	43	94	36			280	4000
XBT2016	25	16	1"	1 1/4"-11	47	98	46			210	3000
XBT2020	32	20	1 1/4"	1 1/4"-11	48	106	46			210	3000
XBT2424	40	24	1 1/2"	1 1/2"-11	49	114	50			185	2700
XBT3223	50	32	2"	2"-11	57	127	65			165	2400

**BSP VLAK**
**AGR  
FLAT SEAT**
**BSP PARALLEL MALE - FLAT SEAT**  
 BSP PARALLELE BU.DR. - VLAKKE ZITTING


TIEFFE Part.N.	Hose I.D. Ø interno tubo			Thread Filettatura F	Dimensions (mm)				
	DN	Size	Inch		H	L	S		
XBMP0404	6	04	1/4"	1/4"-19	25	53	19		
XBMP0604	6	04	1/4"	3/8"-19	27	55	22		
XBMP0605	8	05	5/16"	3/8"-19	27	55	22		
XBMP0606	10	06	3/8"	3/8"-19	27	58	22		
XBMP0806	10	06	3/8"	1/2"-14	32	62	27		
XBMP0808	12	08	1/2"	1/2"-14	33	66	27		
XBMP1008	12	08	1/2"	5/8"-14	35	68	30		
XBMP1208	12	08	1/2"	3/4"-14	36	69	32		
XBMP1010	16	10	5/8"	5/8"-14	35	71	30		
XBMP1210	16	10	5/8"	3/4"-14	36	72	32		
XBMP1212	20	12	3/4"	3/4"-14	37	77	32		
XBMP1612	20	12	3/4"	1"-11	42	82	41		
XBMP1616	25	16	1"	1"-11	43	94	41		
XBMP2020	32	20	1 1/4"	1 1/4"-11	47	105	50		

**BS 5200**
**DKR**
**BSP STRAIGHT FEMALE - 60° CONE**  
 FEMMINA DIRITTA BSP (GAS) - OGIVA 60°


TIEFFE Part.N.	Hose I.D. Ø interno tubo			Thread Filettatura F	Nut Dado	Dimensions (mm)				Maximum W.P.		
	DN	Size	Inch			H	L	S	bar	PSI		
XBF0203	5	03	3/16"	1/8"-28	P	16	41	14			415	6000
XBF0403	5	03	3/16"	1/4"-19	P	19	44	19			415	6000
XBF0204	6	04	1/4"	1/8"-28	P	17	45	14			415	6000
XBF0404	6	04	1/4"	1/4"-19	P	19	47	19			450	6500
XBF0604	6	04	1/4"	3/8"-19	P	22	50	22			450	6500
XBF0804	6	04	1/4"	1/2"-14	P	23	51	27			450	6500
XBF0405	8	05	5/16"	1/4"-19	P	19	47	19			350	5000
XBF0605	8	05	5/16"	3/8"-19	P	22	50	22			350	5000
XBF0805	8	05	5/16"	1/2"-14	P	23	51	27			350	5000
XBF0406	10	06	3/8"	1/4"-19	P	19	49	19			450	6500
XBF0606	10	06	3/8"	3/8"-19	P	21	51	22			450	6500
XBF0806	10	06	3/8"	1/2"-14	P	23	54	27			450	6500
XBF0608	12	08	1/2"	3/8"-19	P	22	56	22			415	6000
XBF0808	12	08	1/2"	1/2"-14	P	23	56	27			415	6000
XBF1008	12	08	1/2"	5/8"-14	P	24	57	30			415	6000
XBF1208	12	08	1/2"	3/4"-14	P	27	60	32			415	6000
XBF0810	16	10	5/8"	1/2"-14	P	23	59	27			350	5000
XBF1010	16	10	5/8"	5/8"-14	P	23	59	30			350	5000
XBF1210	16	10	5/8"	3/4"-14	P	27	63	32			350	5000
XBF0812	20	12	3/4"	1/2"-14	P	24	65	27			350	5000
XBF1012	20	12	3/4"	5/8"-14	P	24	64	30			350	5000
XBF1212	20	12	3/4"	3/4"-14	P	27	67	32			350	5000
XBF1612	20	12	3/4"	1"-11	P	30	70	41			350	5000
XBF1216	25	16	1"	3/4"-14	P	28	79	32			280	4000
XBF1616	25	16	1"	1"-11	P	30	81	41			280	4000
XBF2016	25	16	1"	1 1/4"-11	P	35	86	50			280	4000
XBF2020	32	20	1 1/4"	1 1/4"-11	P	34	92	50			210	3000
XBF2420	32	20	1 1/4"	1 1/2"-11	P	36	93	55			210	3000
XBF2424	40	24	1 1/2"	1 1/2"-11	P	34	99	55			185	2700
XBF3224	40	24	1 1/2"	2"-11	P	39	103	70			185	2700
XBF3232	50	32	2"	2"-11	P	37	107	70			165	2400

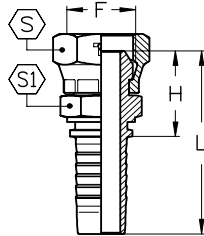
**P - Pressed nut (Dado pressato)**



JIS B 8363

DKR

JIS BSP STRAIGHT FEMALE (NISSAN) - 60° CONE SEAT  
JIS BSP RECHT FEMALE (NISSAN) - 60° CONUS



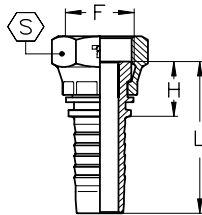
TIEFFE Part.N.	Hose I.D. Ø interno tubo			Thread Filettatura	Nut Dado	Dimensions (mm)				Maximum W.P.		
	DN	Size	Inch	F		H	L	S	S1	bar	PSI	
XBFJ0403	5	03	3/16"	1/4"-19	P	23	48	19	14		415	6000
XBFJ0404	6	04	1/4"	1/4"-19	P	24	52	19	14		450	6500
XBFJ0604	6	04	1/4"	3/8"-19	P	26	54	22	17		450	6500
XBFJ0605	8	05	5/16"	3/8"-19	P	26	54	22	17		350	5000
XBFJ0606	10	06	3/8"	3/8"-19	P	26	57	22	17		450	6500
XBFJ0806	10	06	3/8"	1/2"-14	P	29	60	27	22		450	6500
XBFJ0808	12	08	1/2"	1/2"-14	P	30	63	27	22		415	6000
XBFJ1210	16	10	5/8"	3/4"-14	P	35	71	32	27		350	5000
XBFJ1212	20	12	3/4"	3/4"-14	P	36	76	32	27		350	5000
XBFJ1616	25	16	1"	1"-11	P	40	91	41	32		280	4000
XBFJ2020	32	20	1 1/4"	1 1/4"-11	P	46	104	50	41		210	3000
XBFJ2424	40	24	1 1/2"	1 1/2"-11	P	47	112	55	46		185	2700
XBFJ3232	50	32	2"	2"-11	P	53	123	70	60		165	2400

P - Pressed nut (Dado pressato)

BSP FLAT SEAT

DKR  
FLAT SEAT

BSP STRAIGHT FEMALE - FLAT SEAT  
BSP RECHT FEMALE - VLAK



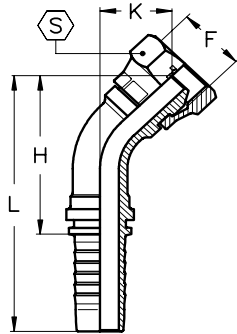
TIEFFE Part.N.	Hose I.D. Ø interno tubo			Thread Filettatura	Nut Dado	Dimensions (mm)						
	DN	Size	Inch	F		H	L	S				
XBP0404	6	04	1/4"	1/4"-19	P	15	43	19				
XBP0604	6	04	1/4"	3/8"-19	P	18	46	22				
XBP0605	8	05	5/16"	3/8"-19	P	18	46	22				
XBP0606	10	06	3/8"	3/8"-19	P	17	47	22				
XBP0806	10	06	3/8"	1/2"-14	P	19	49	27				
XBP0808	12	08	1/2"	1/2"-14	P	19	52	27				
XBP1008	12	08	1/2"	5/8"-14	P	21	54	30				
XBP1208	12	08	1/2"	3/4"-14	P	23	56	32				
XBP1010	16	10	5/8"	5/8"-14	P	20	56	30				
XBP1210	16	10	5/8"	3/4"-14	P	23	59	32				
XBP1212	20	12	3/4"	3/4"-14	P	22	63	32				
XBP1612	20	12	3/4"	1"-11	P	25	65	41				
XBP1616	25	16	1"	1"-11	P	25	76	41				
XBP2424	32	20	1 1/4"	1 1/4"-11	P	28	90	50				

P - Pressed nut (Dado pressato)

BS 5200

DKR45

45° BSP SWEPT ELBOW - 60° CONE  
45° GEBOGEN BSP SLANGKOPPELING - 60° CONUS



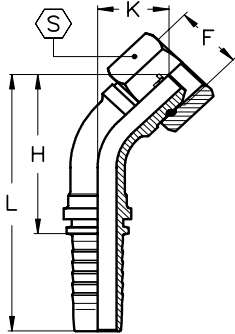
TIEFFE Part.N.	Hose I.D. Ø interno tubo			Thread Filettatura	Nut Dado	Dimensions (mm)				Maximum W.P.	
	DN	Size	Inch	F		H	L	K	S	bar	PSI
XBF450302	5	03	3/16"	1/8"-28	P	33	58	14	14	415	6000
XBF450402	5	03	3/16"	1/4"-19	P	35	60	16	19	415	6000
XBF450204	6	04	1/4"	1/8"-28	P	36	64	16	14	415	6000
XBF450404	6	04	1/4"	1/4"-19	P	37	65	16	19	450	6500
XBF450604	6	04	1/4"	3/8"-19	P	40	68	19	22	450	6500
XBF450804	6	04	1/4"	1/2"-14	P	42	70	21	27	450	6500
XBF450405	8	05	5/16"	1/4"-19	P	39	67	18	19	350	5000
XBF450605	8	05	5/16"	3/8"-19	P	41	69	19	22	350	5000
XBF450805	8	05	5/16"	1/2"-14	P	43	71	21	27	350	5000
XBF450406	10	06	3/8"	1/4"-19	P	41	72	18	19	450	6500
XBF450606	10	06	3/8"	3/8"-19	P	42	73	19	22	450	6500
XBF450806	10	06	3/8"	1/2"-14	P	44	75	21	27	450	6500
XBF450608	12	08	1/2"	3/8"-19	P	49	82	22	22	415	6000
XBF450808	12	08	1/2"	1/2"-14	P	49	82	22	27	415	6000
XBF451008	12	08	1/2"	5/8"-14	P	49	82	22	30	415	6000
XBF451208	12	08	1/2"	3/4"-14	P	53	86	26	32	415	6000
XBF450810	16	10	5/8"	1/2"-14	P	57	93	26	27	350	5000
XBF451010	16	10	5/8"	5/8"-14	P	54	90	24	30	350	5000
XBF451210	16	10	5/8"	3/4"-14	P	57	93	26	32	350	5000
XBF450812	20	12	3/4"	1/2"-14	P	68	108	30	27	350	5000
XBF451012	20	12	3/4"	5/8"-14	P	66	106	28	30	350	5000
XBF451212	20	12	3/4"	3/4"-14	P	66	106	28	32	350	5000
XBF451612	20	12	3/4"	1"-11	P	68	108	30	41	350	5000
XBF451216	25	16	1"	3/4"-14	P	87	138	38	32	280	4000
XBF451616	25	16	1"	1"-11	P	84	135	36	41	280	4000
XBF452016	25	16	1"	1 1/4"-11	P	85	136	37	50	280	4000
XBF452020	32	20	1 1/4"	1 1/4"-11	P	100	157	43	50	210	3000
XBF452420	32	20	1 1/4"	1 1/2"-11	P	100	157	43	55	210	3000
XBF452424	40	24	1 1/2"	1 1/2"-11	P	116	180	49	55	185	2700
XBF453224	40	24	1 1/2"	2"-11	P	116	180	49	70	185	2700
XBF453232	50	32	2"	2"-11	P	150	220	62	70	165	2400

P - Pressed nut (Dado pressato)

**BS 5200**

**DKR45**

**45° BSP SWEPT ELBOW - 60° CONE**  
45° GEBOGEN SLANGKOPPELING MET WARTEL-60° CONUS



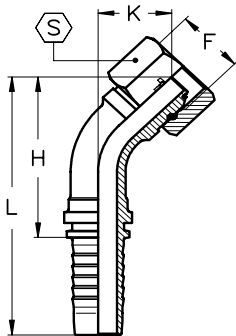
L - Loose nut (Dado libero)  
S - TIEFFE nut (Dado TIEFFE)

TIEFFE Part.N.	Hose I.D. Ø interno tubo			Thread Filettatura F	Nut Dado	Dimensions (mm)				Maximum W.P.		
	DN	Size	Inch			H	L	K	S	bar	PSI	
XBF450404L	6	04	1/4"	1/4"-19	L	35	63	13	19		450	6500
XBF450604L	6	04	1/4"	3/8"-19	L	36	64	14	22		450	6500
XBF450605L	8	05	5/16"	3/8"-19	L	37	65	14	22		350	5000
XBF450606L	10	06	3/8"	3/8"-19	L	38	68	14	22		450	6500
XBF450806L	10	06	3/8"	1/2"-14	L	41	71	17	27		450	6500
XBF450808L	12	08	1/2"	1/2"-14	L	44	77	18	27		415	6000
XBF451008S	12	08	1/2"	5/8"-14	S	49	82	23	30		415	6000
XBF451010S	16	10	5/8"	5/8"-14	S	54	90	23	30		350	5000
XBF451210S	16	10	5/8"	3/4"-14	S	57	93	26	32		350	5000
XBF451212S	20	12	3/4"	3/4"-14	S	66	106	29	32		350	5000
XBF451612S	20	12	3/4"	1"-11	S	68	109	31	41		350	5000
XBF451616S	25	16	1"	1"-11	S	84	135	36	41		280	4000

**BS 5200**

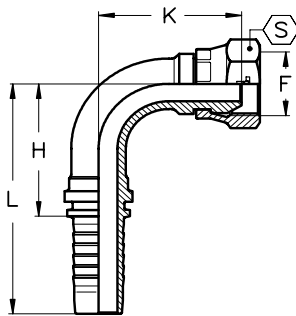
**DKOR45**

**45° BSP SWEPT ELBOW - 60° O-RING CONE**  
45° GEBOGEN SLANGKOPPELING MET WARTEL-60° CONUS MET ORING



L - Loose nut (Dado libero)  
S - TIEFFE nut (Dado TIEFFE)

TIEFFE Part.N.	Hose I.D. Ø interno tubo			Thread Filettatura F	Nut Dado	Dimensions (mm)					Maximum W.P.	
	DN	Size	Inch			H	L	K	S	O'Ring	bar	PSI
XBF450404OL	6	04	1/4"	1/4"-19	L	35	63	13	19	6,5x1	450	6500
XBF450604OL	6	04	1/4"	3/8"-19	L	37	65	15	22	8,5x1,5	450	6500
XBF450605OL	8	05	5/16"	3/8"-19	L	38	66	15	22	8,5x1,5	350	5000
XBF450606OL	10	06	3/8"	3/8"-19	L	39	69	15	22	8,5x1,5	450	6500
XBF450806OL	10	06	3/8"	1/2"-14	L	41	71	18	27	11,5x1,5	450	6500
XBF450808OL	12	08	1/2"	1/2"-14	L	45	78	18	27	11,5x1,5	415	6000
XBF451008OL	12	08	1/2"	5/8"-14	S	51	84	24	30	13x1,5	415	6000
XBF451010OS	16	10	5/8"	5/8"-14	S	55	91	24	30	13x1,5	350	5000
XBF451210OS	16	10	5/8"	3/4"-14	S	58	94	27	32	17x1,5	350	5000
XBF451212OS	20	12	3/4"	3/4"-14	S	66	107	29	32	17x1,5	350	5000
XBF451612OS	20	12	3/4"	1"-11	S	69	110	32	41	22x1,5	350	5000
XBF451616OS	25	16	1"	1"-11	S	85	136	37	41	22x1,5	280	4000
XBF452016OS	25	16	1"	1 1/4"-11	S	86	137	38	50	28,3x1,78	280	4000
XBF452020OS	32	20	1 1/4"	1 1/4"-11	S	99	157	43	50	28,3x1,78	210	3000
XBF452420OS	32	20	1 1/4"	1 1/2"-11	S	99	157	43	55	33,05x1,78	210	3000
XBF452424OS	40	24	1 1/2"	1 1/2"-11	S	118	182	51	55	33,05x1,78	185	2700
XBF453224OS	40	24	1 1/2"	2"-11	S	118	182	51	70	44,17x1,78	185	2700
XBF453232OS	50	32	2"	2"-11	S	153	223	65	70	44,17x1,78	165	2400

**BS 5200**
**DKR90**
**90° BSP SWEPT ELBOW - 60° CONE**  
 90° GEBOGEN SLANGKOPPELING BSP - 60° CONUS


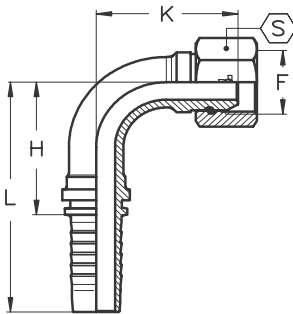
TIEFFE Part.N.	Hose I.D. Ø interno tubo			Thread Filettatura	Nut Dado	Dimensions (mm)				Maximum W.P.		
	DN	Size	Inch	F		H	L	K	S	bar	PSI	
XBF900203	5	03	3/16"	1/8"-28	P	21	46	23	14		415	6000
XBF900403	5	03	3/16"	1/4"-19	P	21	46	26	19		415	6000
XBF900204	6	04	1/4"	1/8"-28	P	26	54	28	14		415	6000
XBF900404	6	04	1/4"	1/4"-19	P	26	54	28	19		450	6500
XBF900604	6	04	1/4"	3/8"-19	P	26	54	32	22		450	6500
XBF900804	6	04	1/4"	1/2"-14	P	26	54	36	27		450	6500
XBF900405	8	05	5/16"	1/4"-19	P	28	56	31	19		350	5000
XBF900605	8	05	5/16"	3/8"-19	P	28	56	34	22		350	5000
XBF900805	8	05	5/16"	1/2"-14	P	28	56	37	27		350	5000
XBF900406	10	06	3/8"	1/4"-19	P	31	61	34	19		450	6500
XBF900606	10	06	3/8"	3/8"-19	P	31	61	35	22		450	6500
XBF900806	10	06	3/8"	1/2"-14	P	31	61	38	27		450	6500
XBF900608	12	08	1/2"	3/8"-19	P	37	70	42	22		415	6000
XBF900808	12	08	1/2"	1/2"-14	P	37	70	42	27		415	6000
XBF901008	12	08	1/2"	5/8"-14	P	37	70	43	30		415	6000
XBF901208	12	08	1/2"	3/4"-14	P	37	70	48	32		415	6000
XBF900810	16	10	5/8"	1/2"-14	P	45	80	50	27		350	5000
XBF901010	16	10	5/8"	5/8"-14	P	45	80	46	30		350	5000
XBF901210	16	10	5/8"	3/4"-14	P	45	80	50	32		350	5000
XBF900812	20	12	3/4"	1/2"-14	P	54	95	59	27		350	5000
XBF901012	20	12	3/4"	5/8"-14	P	54	95	56	30		350	5000
XBF901212	20	12	3/4"	3/4"-14	P	54	95	56	32		350	5000
XBF901612	20	12	3/4"	1"-11	P	54	95	59	41		350	5000
XBF901216	25	16	1"	3/4"-14	P	70	121	75	32		280	4000
XBF901616	25	16	1"	1"-11	P	70	121	72	41		280	4000
XBF902016	25	16	1"	1 1/4"-11	P	70	121	73	50		280	4000
XBF902020	32	20	1 1/4"	1 1/4"-11	P	84	142	87	50		210	3000
XBF902420	32	20	1 1/4"	1 1/2"-11	P	84	142	87	55		210	3000
XBF902424	40	24	1 1/2"	1 1/2"-11	P	100	165	100	55		185	2700
XBF903224	40	24	1 1/2"	2"-11	P	100	165	100	70		185	2700
XBF903232	50	32	2"	2"-11	P	134	204	131	70		165	2400

**P - Pressed nut (Dado pressato)**

**BS 5200**

**DKR90**

**90° BSP SWEEP ELBOW - 60° CONE**  
90° GEBOGEN SLANGKOPPELING BSP - 60° CONUS



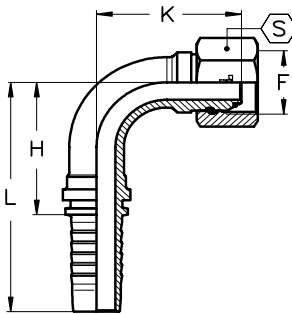
**L** - Loose nut (*Dado libero*)  
**S** - TIEFFE nut (*Dado TIEFFE*)

TIEFFE Part.N.	Hose I.D. Ø interno tubo			Thread Filettatura F	Nut Dado	Dimensions (mm)				Maximum W.P.		
	DN	Size	Inch			H	L	K	S	bar	PSI	
XBF900404L	6	04	1/4"	1/4"-19	L	29	57	26	19		450	6500
XBF900604L	6	04	1/4"	3/8"-19	L	29	57	28	22		450	6500
XBF900605L	8	05	5/16"	3/8"-19	L	29	57	28	22		350	5000
XBF900606L	10	06	3/8"	3/8"-19	L	30	61	29	22		450	6500
XBF900806L	10	06	3/8"	1/2"-14	L	30	61	32	27		450	6500
XBF900808L	12	08	1/2"	1/2"-14	L	37	70	35	27		415	6000
XBF901008S	12	08	1/2"	5/8"-14	S	37	70	43	30		415	6000
XBF901010S	16	10	5/8"	5/8"-14	S	44	80	46	30		350	5000
XBF901210S	16	10	5/8"	3/4"-14	S	44	80	50	32		350	5000
XBF901212S	20	12	3/4"	3/4"-14	S	54	94	56	32		350	5000
XBF901612S	20	12	3/4"	1"-11	S	54	94	60	41		350	5000
XBF901616S	25	16	1"	1"-11	S	70	121	72	41		280	4000

**BS 5200**

**DKOR90**

**90° BSP SWEEP ELBOW - 60° CONE**  
90° GEBOGEN SLANGKOPPELING BSP - 60° CONUS MET ORING



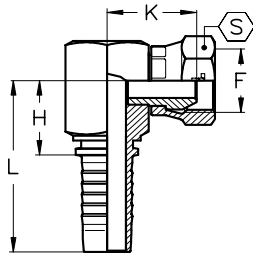
**L** - Loose nut (*Dado libero*)  
**S** - TIEFFE nut (*Dado TIEFFE*)

TIEFFE Part.N.	Hose I.D. Ø interno tubo			Thread Filettatura F	Nut Dado	Dimensions (mm)					Maximum W.P.	
	DN	Size	Inch			H	L	K	S	O'Ring	bar	PSI
XBF900404OL	6	04	1/4"	1/4"-19	L	29	57	27	19	6,5x1	450	6500
XBF900604OL	6	04	1/4"	3/8"-19	L	29	57	29	22	8,5x1,5	450	6500
XBF900605OL	8	05	5/16"	3/8"-19	L	29	57	29	22	8,5x1,5	350	5000
XBF900606OL	10	06	3/8"	3/8"-19	L	30	61	30	22	8,5x1,5	450	6500
XBF900806OL	10	06	3/8"	1/2"-14	L	30	61	33	27	11,5x1,5	450	6500
XBF900808OL	12	08	1/2"	1/2"-14	L	37	70	36	27	11,5x1,5	415	6000
XBF901008OL	12	08	1/2"	5/8"-14	S	37	70	45	30	13x1,5	415	6000
XBF901010S	16	10	5/8"	5/8"-14	S	44	80	48	30	13x1,5	350	5000
XBF901210S	16	10	5/8"	3/4"-14	S	44	80	51	32	17x1,5	350	5000
XBF901212S	20	12	3/4"	3/4"-14	S	54	94	57	32	17x1,5	350	5000
XBF901612S	20	12	3/4"	1"-11	S	54	94	61	41	22x1,5	350	5000
XBF901616S	25	16	1"	1"-11	S	70	121	73	41	22x1,5	280	4000
XBF902016S	25	16	1"	1 1/4"-11	S	70	121	76	50	28,3x1,78	280	4000
XBF902020S	32	20	1 1/4"	1 1/4"-11	S	84	142	88	50	28,3x1,78	210	3000
XBF902420S	32	20	1 1/4"	1 1/2"-11	S	84	142	88	55	33,05x1,78	210	3000
XBF902424S	40	24	1 1/2"	1 1/2"-11	S	100	165	104	55	33,05x1,78	185	2700
XBF903224S	40	24	1 1/2"	2"-11	S	100	165	104	70	44,17x1,78	185	2700
XBF903232S	50	32	2"	2"-11	S	134	204	137	70	44,17x1,78	165	2400

BS 5200

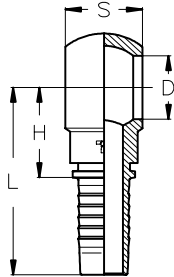
**DKR90**  
(COMPACT)

**90° BSP COMPACT ELBOW - 60° CONE**  
SLANGKOPPELING BSP 90° KORT - 60° CONUS

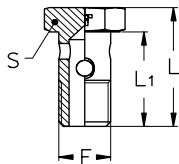


TIEFFE Part.N.	Hose I.D. Ø interno tubo			Thread Filettatura	Nut Dado	Dimensions (mm)				Maximum W.P.	
	DN	Size	Inch	F		H	L	K	S	bar	PSI
<b>XBF90K0404</b>	6	04	1/4"	1/4"-19	P	18	46	23	19	450	6500
<b>XBF90K0604</b>	8	05	5/16"	1/4"-19	P	21	49	26	22	450	6500
<b>XBF90K0605</b>	8	05	5/16"	3/8"-19	P	21	49	26	22	350	5000
<b>XBF90K0606</b>	10	06	3/8"	3/8"-19	P	21	52	26	22	450	6500
<b>XBF90K0806</b>	12	08	1/2"	1/2"-14	P	24	54	28	27	450	6500
<b>XBF90K0808</b>	12	08	1/2"	1/2"-14	P	24	57	28	27	415	6000
<b>XBF90K1212</b>	20	12	3/4"	3/4"-14	P	31	72	35	32	350	5000
<b>XBF90K1616</b>	25	16	1"	1"-11	P	38	89	41	41	280	4000

P - Pressed nut (Dado pressato)

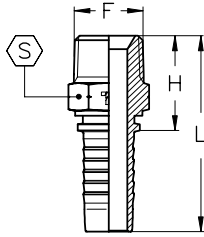
**B.S.P. BANJO**  
 BANJOKOPPELING BSP


TIEFFE Part.N.	Hose I.D. Ø interno tubo			Thread Filettatura	Dimensions (mm)			
	DN	Size	Inch	F	H	L	D	S
XQB0203	5	03	3/16"	1/8"-28	20	45	10,2	10
XQB0403	5	03	3/16"	1/4"-19	22,6	47,6	13,3	14
XQB0204	6	04	1/4"	1/8"-28	23	51	10,2	10
XQB0404	6	04	1/4"	1/4"-19	23	51	13,3	14
XQB0604	6	04	1/4"	3/8"-19	26,5	54,5	16,8	17,5
XQB0804	6	04	1/4"	1/2"-14	33,5	61,5	21	23
XQB0405	8	05	5/16"	1/4"-19	24	52	13,3	14
XQB0605	8	05	5/16"	3/8"-19	26,5	54,5	16,8	17,5
XQB0805	8	05	5/16"	1/2"-14	33,5	61,5	21	23
XQB0406	10	06	3/8"	1/4"-19	24	54,5	13,3	14
XQB0606	10	06	3/8"	3/8"-19	24	54,5	16,8	17,5
XQB0806	10	06	3/8"	1/2"-14	32	62,5	21	23
XQB0608	12	08	1/2"	3/8"-19	26,5	59,5	16,8	17,5
XQB0808	12	08	1/2"	1/2"-14	28,5	61,5	21	23
XQB1008	12	08	1/2"	5/8"-14	31	64	23,1	23,5
XQB1208	12	08	1/2"	3/4"-14	39	72	26,5	29,5
XQB0810	16	10	5/8"	1/2"-14	27,2	63	21	23
XQB1010	16	10	5/8"	5/8"-14	28,2	64	23,1	23,5
XQB1210	16	10	5/8"	3/4"-14	34,7	70,5	26,5	29,5
XQB1212	20	12	3/4"	3/4"-14	37,5	78	26,5	29,5
XQB1612	20	12	3/4"	1"-11	39,5	90,5	33,5	37,5
XQB1616	25	10	1	1"-11	49	100	33,5	37,5

**B.S.P. BANJO BOLT**  
 BANJOBOUT BSP


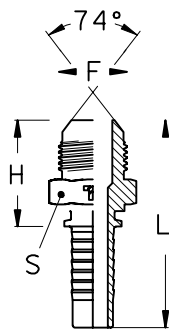
TIEFFE Part.N.	Thread Filettatura	Dimensions (mm)		
	F	L	L1	S
QMB02	1/8"-28	26	21,5	14
QMB04	1/4"-19	34,3	29,5	19
QMB06	3/8"-19	40,5	34	22
QMB08	1/2"-14	46	36	27
QMB10	5/8"-14	55	45,5	30
QMB12	3/4"-14	56	48	32
QMB16	1"-11	69	59	41

SAEJ516	AGN	NPTF MALE - 60° CONE SEAT MASCHIO NPTF - SVASATO 60°												
		TIEFFE Part. N.	Hose I.D. Ø interno tubo			Thread Filetto	Dimensions (mm)						Maximum WP	
			DN	Size	Inch		F	H	L	S			bar	PSI
	XNM0203	5	03	3/16"	1/8"-27	20,6	45,6	12					415	6000
	XNM0403	5	03	3/16"	1/4"-18	26,5	51,5	14					415	6000
	XNM0204	6	04	1/4"	1/8"-27	21,1	49,1	12					450	6500
	XNM0404	6	04	1/4"	1/4"-18	27	55	14					450	6500
	XNM0604	6	04	1/4"	3/8"-18	28,6	56,6	19					450	6500
	XNM0804	6	04	1/4"	1/2"-14	34	62	22					415	6000
	XNM0405	8	05	5/16"	1/4"-18	27	55	14					350	5000
	XNM0605	8	05	5/16"	3/8"-18	28,6	56,6	19					350	5000
	XNM0805	8	05	5/16"	1/2"-14	34	62	22					350	5000
	XNM0406	10	06	3/8"	1/4"-18	27,5	58	16					450	6500
	XNM0606	10	06	3/8"	3/8"-18	28,6	59,1	19					450	6500
	XNM0806	10	06	3/8"	1/2"-14	34	64,5	22					415	6000
	XNM0608	12	08	1/2"	3/8"-18	30,6	63,6	22					415	6000
	XNM0808	12	08	1/2"	1/2"-14	35	68	22					415	6000
	XNM1208	12	08	1/2"	3/4"-14	36,9	69,9	27					350	5000
	XNM0810	16	10	5/8"	1/2"-14	36,2	72	25					350	5000
	XNM1210	16	10	5/8"	3/4"-14	37,1	72,9	27					350	5000
	XNM0812	20	12	3/4"	1/2"-14	37,5	78	27					350	5000
	XNM1212	20	12	3/4"	3/4"-14	37,9	78,4	27					350	5000
	XNM1612	20	12	3/4"	1"-11,5	45,5	86	35					280	4000
	XNM1216	25	16	1"	3/4"-14	40,4	91,4	32					280	4000
	XNM1616	25	16	1"	1"-11,5	47	98	35					280	4000
	XNM2016	25	16	1"	1 1/4"-11,5	51,1	102,1	46					210	3000
	XNM2020	32	20	1 1/4"	1 1/4"-11,5	51,9	109,6	46					210	3000
	XNM2424	40	24	1 1/2"	1 1/2"-11,5	55	119,5	50					185	2700
	XNM3232	50	32	2"	2"-11,5	64	134	65					165	2400

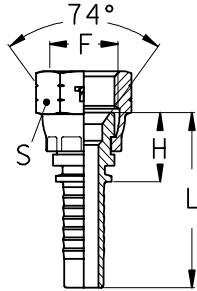


**AGJ**

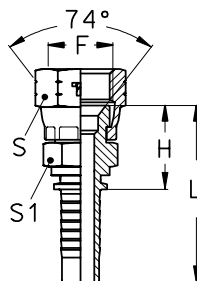
**J.I.C. MALE - 74° CONE**  
**SLANGKOPPELING BU.DR. J.I.C. - CONUS 74°**



TIEFFE Part. N.	Hose I.D. Ø interno tubo			Thread Filetto	Dimensions (mm)						Maximum WP
	DN	Size	Inch	F	H	L	S				bar
XJM0703	5	03	3/16"	7/16"-20	26,3	52	12				415
XJM0803	5	03	3/16"	1/2"-20	26,3	52	14				415
XJM0704	6	04	1/4"	7/16"-20	26,5	55	12				450
XJM0804	6	04	1/4"	1/2"-20	26,5	55	14				450
XJM0904	6	04	1/4"	9/16"-18	26,5	55	15				450
XJM0805	8	05	5/16"	1/2"-20	26,5	55	14				350
XJM0905	8	05	5/16"	9/16"-18	26,5	55	15				350
XJM1205	8	05	5/16"	3/4"-16	30,2	58,7	19				350
XJM0906	10	06	3/8"	9/16"-18	26,5	57	15				450
XJM1206	10	06	3/8"	3/4"-16	30,2	60,5	19				415
XJM1406	10	06	3/8"	7/8"-14	34,2	64,7	24				350
XJM1208	12	08	1/2"	3/4"-16	31	64	19				415
XJM1408	12	08	1/2"	7/8"-14	35,5	68	24				350
XJM1708	12	08	1/2"	1 1/16"-12	38,5	71,5	27				350
XJM1410	16	10	5/8"	7/8"-14	35	71	24				350
XJM1710	16	10	5/8"	1 1/16"-12	38,5	74,5	27				350
XJM1412	20	12	3/4"	7/8"-14	36	77	27				350
XJM1712	20	12	3/4"	1 1/16"-12	39,5	80,5	27				350
XJM1912	20	12	3/4"	1 3/16"-12	41,5	82,5	32				280
XJM2112	20	12	3/4"	1 5/16"-12	42	83	36				280
XJM1716	25	16	1"	1 1/16"-12	41	96	32				280
XJM2116	25	16	1"	1 5/16"-12	42,7	97,7	36				280
XJM2616	25	16	1"	1 5/8"-12	46	101	46				280
XJM2620	32	20	1 1/4"	1 5/8"-12	46,5	107,5	46				210
XJM3020	32	20	1 1/4"	1 7/8"-12	51	112	50				140
XJM3024	40	24	1 1/2"	1 7/8"-12	51,2	121,7	50				140
XJM4032	50	32	2"	2 1/2"-12	62,2	138,2	65				105



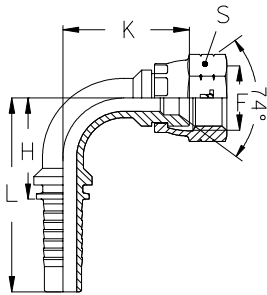
TIEFFE Part. N.	DKJ J.I.C. FEMALE - 74° CONE SEAT - CRIMPED NUT SLANGKOPPELING WARTEL J.I.C. - CONUS ZITTING 74° - MOER GEPERST										Maximum WP bar
	Hose I.D. Ø interno tubo			Thread Filetto	Dimensions (mm)					Maximum WP bar	
	DN	Size	Inch	F	H	L	S				
XJF0703	5	03	3/16"	7/16"-20	14,5	40,2	15				350
XJF0703SW14	5	03	3/16"	7/16"-20	14,5	40,2	14				350
XJF0803	5	03	3/16"	1/2"-20	16,8	42,5	17				350
XJF0704	6	04	1/4"	7/16"-20	14,7	43,2	15				350
XJF0704SW14	6	04	1/4"	7/16"-20	14,7	43,2	14				350
XJF0804	6	04	1/4"	1/2"-20	16	44,5	17				350
XJF0904	6	04	1/4"	9/16"-18	18	46,5	19				250
XJF0805	8	05	5/16"	1/2"-20	16	44,5	17				350
XJF0905	8	05	5/16"	9/16"-18	17	45,5	19				250
XJF1205	8	05	5/16"	3/4"-16	18,5	47	24				250
XJF1205SW22	8	05	5/16"	3/4"-16	18,5	47	22				250
XJF0906	10	06	3/8"	9/16"-18	17	47,5	19				250
XJF1206	10	06	3/8"	3/4"-16	18,5	49	24				250
XJF1206SW22	10	06	3/8"	3/4"-16	18,5	49	22				250
XJF1406	10	06	3/8"	7/8"-14	19,5	50	27				200
XJF1208	12	08	1/2"	3/4"-16	18,5	51,5	24				250
XJF1208SW22	12	08	1/2"	3/4"-16	18,5	51,5	22				250
XJF1408	12	08	1/2"	7/8"-14	19,5	52,5	27				200
XJF1708	12	08	1/2"	1 1/16"-12	22,5	55,5	32				200
XJF1410	16	10	5/8"	7/8"-14	19,5	55,5	27				200
XJF1710	16	10	5/8"	1 1/16"-12	22,5	58,5	32				200
XJF1412	20	12	3/4"	7/8"-14	20,5	61,5	27				200
XJF1712	20	12	3/4"	1 1/16"-12	22	63	32				200
XJF1912	20	12	3/4"	1 3/16"-12	25,2	66,2	36				160
XJF2112	20	12	3/4"	1 5/16"-12	25,7	66,7	41				160
XJF1716	25	16	1"	1 1/16"-12	23,5	78,5	32				200
XJF2116	25	16	1"	1 5/16"-12	26	81	41				160
XJF2616	25	16	1"	1 5/8"-12	28,8	83,8	50				125
XJF2620	32	20	1 1/4"	1 5/8"-12	27,8	88,8	50				125
XJF3020	32	20	1 1/4"	1 7/8"-12	31	92	55				100
XJF3024	40	24	1 1/2"	1 7/8"-12	31,5	102	55				100
XJF4032	50	32	2"	2 1/2"-12	33,5	109,5	70				80



TIEFFE Part. N.	DKJ JIC STRAIGHT FEMALE - 74° CONE SEAT - DOUBLE EXAGON SLANGKOPPELING WARTEL JIC - CONUS 74° - DUBBELE EXAGON										Maximum WP bar
	Hose I.D. Ø interno tubo			Thread Filetto	Dimensions (mm)					Maximum WP bar	
	DN	Size	Inch	F	H	L	S	S1			
CP0404FIC	6	04	1/4"	7/16"-20	19	47,5	15	12			350
CP0404FIC-EX14	6	04	1/4"	7/16"-20	19	47,5	14	12			350
CP0405FIC	6	04	1/4"	1/2"-20	19	47,5	17	14			350
CP0406FIC	6	04	1/4"	9/16"-18	23	51,5	19	14			250
CP0506FIC	8	05	5/16"	9/16"-18	23	51,5	19	14			250
CP0606FIC	10	06	3/8"	9/16"-18	23	53,4	19	15			250
CP0608FIC	10	06	3/8"	3/4"-16	23,5	54	24	19			250
CP0608FIC-EX22	10	06	3/8"	3/4"-16	23,5	54	22	19			250
CP0808FIC	12	08	1/2"	3/4"-16	24,5	57,5	24	19			250
CP0808FIC-EX22	12	08	1/2"	3/4"-16	24,5	57,5	22	19			250
CP0810FIC	12	08	1/2"	7/8"-14	25,5	58,5	27	22			200
CP1010FIC	16	10	5/8"	7/8"-14	25,5	61,5	27	22			200
CP1012FIC	16	10	5/8"	1 1/16"-12	28	64	32	27			200
CP1212FIC	20	12	3/4"	1 1/16"-12	29	70	32	27			200
CP1616FIC	25	16	1"	1 5/16"-12	35	90	41	32			160

**DKJ90**

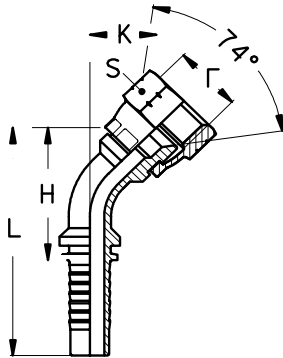
**J.I.C. 90° SWEEP ELBOW - 74° CONE SEAT - ONE PIECE - CRIMPED NUT**  
**SLANGKOPPELING 90° J.I.C. - CONUS 74° - UIT EEN STUK, MOER**  
**GEPERST**



TIEFFE Part. N.	Hose I.D. Ø interno tubo			Thread Filetto	Dimensions (mm)					Maximum WP
	DN	Size	Inch	F	H	L	K	S		bar
XJF900703	5	03	3/16"	7/16"-20	21	47	22	15		350
XJF900703SW14	5	03	3/16"	7/16"-20	21	47	22	14		350
XJF900803	5	03	3/16"	1/2"-20	21	47	23	17		350
XJF900704	6	04	1/4"	7/16"-20	24	52	24	15		350
XJF900704SW14	6	04	1/4"	7/16"-20	24	52	24	14		350
XJF900804	6	04	1/4"	1/2"-20	24	52	25	17		350
XJF900904	6	04	1/4"	9/16"-18	23,5	52	27	19		250
XJF900805	8	05	5/16"	1/2"-20	31	59	29	17		350
XJF900905	8	05	5/16"	9/16"-18	30,5	59	30,5	19		250
XJF901205	8	05	5/16"	3/4"-16	30,5	59	33,5	24		250
XJF901205SW22	8	05	5/16"	3/4"-16	30,5	59	33,5	22		250
XJF900906	10	06	3/8"	9/16"-18	33,5	64	36,5	19		250
XJF901206	10	06	3/8"	3/4"-16	33,5	64	36	24		250
XJF901206SW22	10	06	3/8"	3/4"-16	33,5	64	36	22		250
XJF901406	10	06	3/8"	7/8"-14	33,5	64	38,5	27		200
XJF901208	12	08	1/2"	3/4"-16	41	74	40,5	24		250
XJF901208SW22	12	08	1/2"	3/4"-16	41	74	40,5	22		250
XJF901408	12	08	1/2"	7/8"-14	41	74	42	27		200
XJF901708	12	08	1/2"	1 1/16"-12	41	74	45,5	32		200
XJF901410	16	10	5/8"	7/8"-14	49	85	47	27		200
XJF901710	16	10	5/8"	1 1/16"-12	49	85	50,5	32		200
XJF901412	20	12	3/4"	7/8"-14	58	99	58	27		200
XJF901712	20	12	3/4"	1 1/16"-12	58	99	56,5	32		200
XJF901912	20	12	3/4"	1 3/16"-12	58	99	64	36		160
XJF902112	20	12	3/4"	1 5/16"-12	58	99	65	41		160
XJF901716	25	16	1"	1 1/16"-12	74	129	76	32		200
XJF902116	25	16	1"	1 5/16"-12	74	129	72	41		160
XJF902616	25	16	1"	1 5/8"-12	74	129	77	50		125
XJF902620	32	20	1 1/4"	1 5/8"-12	92	153	87	50		125
XJF903020	32	20	1 1/4"	1 7/8"-12	92	153	91	55		100
XJF903024	40	24	1 1/2"	1 7/8"-12	108	179	100	55		100
XJF904032	50	32	2"	2 1/2"-12	142	218	126	70		80

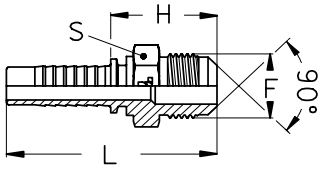
**DKJ45**

**J.I.C. 45° SWEEP ELBOW - 74° CONE SEAT - ONE PIECE - CRIMPED NUT**  
**SLANGKOPPELING 45° J.I.C. - CONUS 74° - UIT EEN STUK, MOER**  
**GEPERST**

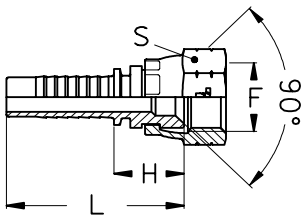


TIEFFE Part. N.	Hose I.D. Ø interno tubo			Thread Filetto	Dimensions (mm)					Maximum WP bar
	DN	Size	Inch	F	H	L	K	S		
XJF450703	5	03	3/16"	7/16"-20	34,5	60,5	13	15		350
XJF450703SW14	5	03	3/16"	7/16"-20	34,5	60,5	13	14		350
XJF450803	5	03	3/16"	1/2"-20	36	62	14,5	17		350
XJF450704	6	04	1/4"	7/16"-20	37	66	13,5	15		350
XJF450704SW14	6	04	1/4"	7/16"-20	37	66	13,5	14		350
XJF450804	6	04	1/4"	1/2"-20	38	67	14,5	17		350
XJF450904	6	04	1/4"	9/16"-18	39,5	68	15,5	19		250
XJF450805	8	05	5/16"	1/2"-20	46	74,5	16	17		350
XJF450905	8	05	5/16"	9/16"-18	47,5	76	17,5	19		250
XJF451205	8	05	5/16"	3/4"-16	49,5	77,5	19	24		250
XJF451205SW22	8	05	5/16"	3/4"-16	49,5	77,5	19	22		250
XJF450906	10	06	3/8"	9/16"-18	53,5	84	19,5	19		250
XJF451206	10	06	3/8"	3/4"-16	53,5	84	19,5	24		250
XJF451206SW22	10	06	3/8"	3/4"-16	53,5	84	19,5	22		250
XJF451406	10	06	3/8"	7/8"-14	55	85,5	21	27		200
XJF451208	12	08	1/2"	3/4"-16	61,5	94,5	22	24		200
XJF451208SW22	12	08	1/2"	3/4"-16	61,5	94,5	22	22		250
XJF451408	12	08	1/2"	7/8"-14	62,5	95,5	23	27		200
XJF451708	12	08	1/2"	1 1/16"-12	65	98	25,5	32		200
XJF451410	16	10	5/8"	7/8"-14	76	112	24	27		200
XJF451710	16	10	5/8"	1 1/16"-12	78,5	114,5	26	32		200
XJF451412	20	12	3/4"	7/8"-14	87	128	33,5	27		200
XJF451712	20	12	3/4"	1 1/16"-12	85,5	126,5	32	32		200
XJF451912	20	12	3/4"	1 3/16"-12	88,5	129,5	35	36		160
XJF452112	20	12	3/4"	1 5/16"-12	91	132	37,5	41		160
XJF451716	25	16	1"	1 1/16"-12	113	167,5	44,5	32		200
XJF452116	25	16	1"	1 5/16"-12	108	162,5	40	41		160
XJF452616	25	16	1"	1 5/8"-12	111	166	43	50		125
XJF452620	32	20	1 1/4"	1 5/8"-12	136	196,5	52	50		125
XJF453020	32	20	1 1/4"	1 7/8"-12	141	201,5	57	55		100
XJF453024	40	2'4	1 1/2"	1 7/8"-12	161	231	57	55		100
XJF454032	50	32	2"	2 1/2"-12	206	281	66,5	70		80

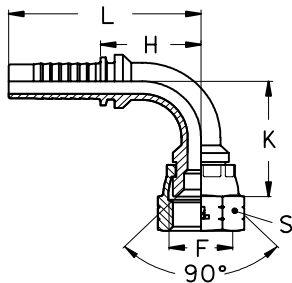
		SAE MALE - 90° CONE SLANGKOPPELING BU.DR. SAE - CONUS 90°									
TIEFFE Part. N.	Hose I.D. Ø interno tubo			Thread Filetto	Dimensions (mm)						
	DN	Size	Inch	F	H	L	S				
<b>XMS1005</b>	8	05	5/16"	5/8"-18	28,2	56,7	17				
<b>XMS1006</b>	10	06	3/8"	5/8"-18	28,2	58,7	17				
<b>XMS1712</b>	20	12	3/4"	1 1/16"-14	40,5	81,5	27				



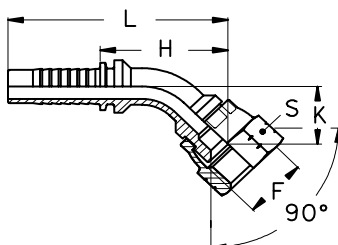
		SAE FEMALE - 90° CONE SEAT - CRIMPED NUT SLANGKOPPELING SAE - CONUS 90° - UIT EEN STUK, MOER GEPERST									
TIEFFE Part. N.	Hose I.D. Ø interno tubo			Thread Filetto	Dimensions (mm)						
	DN	Size	Inch	F	H	L	S				
<b>XFS1005</b>	8	05	5/16"	5/8"-18	17,6	46,1	22				
<b>XFS1006</b>	10	06	3/8"	5/8"-18	16,6	47,1	22				
<b>XFS1712</b>	20	12	3/4"	1 1/16"-14	23,2	64,2	32				



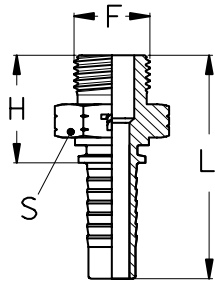
		SAE 90° SWEPT ELBOW - 90° CONE SEAT - ONE PIECE - CRIMPED NUT SLANGKOPPELING 90° SAE - CONUS 90° - UIT EEN STUK, MOER GEPERST									
TIEFFE Part. N.	Hose I.D. Ø interno tubo			Thread Filetto	Dimensions (mm)						
	DN	Size	Inch	F	H	L	K	S			
<b>XFS901005</b>	8	05	5/16"	5/8"-18	31	59	30	22			
<b>XFS901006</b>	10	06	3/8"	5/8"-18	34	64	33	22			
<b>XFS901712</b>	20	12	3/4"	1 1/16"-14	58	99	56	32			



		SAE 45° SWEPT ELBOW - 90° CONE SEAT - ONE PIECE - CRIMPED NUT SLANGKOPPELING 45° SAE - CONUS 90° - UIT EEN STUK, MOER GEPERST									
TIEFFE Part. N.	Hose I.D. Ø interno tubo			Thread Filetto	Dimensions (mm)						
	DN	Size	Inch	F	H	L	K	S			
<b>XFS451005</b>	8	05	5/16"	5/8"-18	47	75	18	22			
<b>XFS451006</b>	10	06	3/8"	5/8"-18	50	81	18	22			
<b>XFS451712</b>	20	12	3/4"	1 1/16"-14	85	125	32	32			



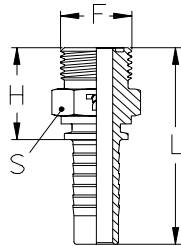
**SAE O' RING MALE**  
**BU.DR. SLANGKOPPELING SAE MET ORING**



TIEFFE Part. N.	Hose I.D. Ø interno tubo			Thread Filetto	Dimensions (mm)					Maximum WP
	DN	Size	Inch	F	H	L	S			bar
CP0404MS	6	04	1/4"	7/16"-20	23	51,5	14			350
CP0405MS	6	04	1/4"	1/2"-20	23	51,5	17			350
CP0406MS	6	04	1/4"	9/16"-18	24,5	53	17			250
CP0506MS	8	05	5/16"	9/16"-18	24,5	53	17			250
CP0606MS	10	06	3/8"	9/16"-18	24,5	55	17			250
CP0608MS	10	06	3/8"	3/4"-16	26,5	57	24			250
CP0808MS	12	08	1/2"	3/4"-16	27	60	24			250
CP0810MS	12	08	1/2"	7/8"-14	30	63	25			200
CP0812MS	12	08	1/2"	1 1/16"-12	34	67	32			200
CP1010MS	16	10	5/8"	7/8"-14	30	66	25			200
CP1012MS	16	10	5/8"	1 1/16"-12	34	70	32			200
CP1212MS	20	12	3/4"	1 1/16"-12	35	76	32			200
CP1216MS	20	12	3/4"	1 5/16"-12	36	77	38			160
CP1616MS	25	16	1"	1 5/16"-12	37	92	38			160

**ORFS**

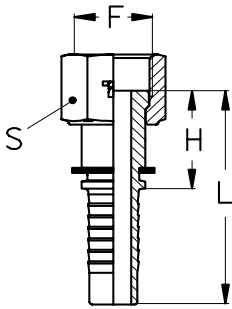
**ORFS MALE**  
**BU.DR. SLANGKOPPELING ORFS**



TIEFFE Part. N.	Hose I.D. Ø interno tubo			Thread Filetto	Dimensions (mm)					Maximum WP
	DN	Size	Inch	F	H	L	S			bar
XMU0904	6	04	1/4"	9/16"-18	23,5	52	17			450
XMU1104	6	04	1/4"	11/16"-16	26	54,5	19			450
XMU1105	8	05	5/16"	11/16"-16	26	54,5	19			350
XMU1106	10	06	3/8"	11/16"-16	26	56,5	19			445
XMU1306	10	06	3/8"	13/16"-16	28	58,5	22			445
XMU1606	10	06	3/8"	1"-14	32,5	63	27			445
XMU1308	12	08	1/2"	13/16"-16	29	62	22			415
XMU1608	12	08	1/2"	1"-14	33,5	66,5	27			415
XMU1908	12	08	1/2"	1 3/16"-12	35	68	32			415
XMU1610	16	10	5/8"	1"-14	33,5	69,5	27			350
XMU1910	16	10	5/8"	1 3/16"-12	35	71	32			350
XMU1912	20	12	3/4"	1 3/16"-12	36	77	32			350
XMU2312	20	12	3/4"	1 7/16"-12	36,5	77,5	41			350
XMU2316	25	16	1"	1 7/16"-12	38	93	41			280
XMU2720	32	20	1 1/4"	1 11/16"-12	40	101	46			210
XMU3224	40	24	1 1/2"	2"-12	43	113,5	55			185

**ORFS**

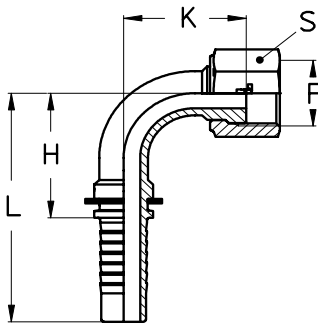
**ORFS FEMALE - LOOSE NUT**  
**SLANGKOPPELING WARTEL ORFS - LOSSE MOER**



TIEFFE Part. N.	Hose I.D. Ø interno tubo			Thread Filetto F	Dimensions (mm)					Maximum WP bar
	DN	Size	Inch		H	L	S			
XFU0904	6	04	1/4"	9/16"-18	21	49,5	17			450
XFU1104	6	04	1/4"	11/16"-16	23	51,5	22			450
XFU1105	8	05	5/16"	11/16"-16	23	51,5	22			350
XFU1106	10	06	3/8"	11/16"-16	23	53,5	22			445
XFU1306	10	06	3/8"	13/16"-16	26	56,5	24			445
XFU1308	12	08	1/2"	13/16"-16	26,5	59,5	24			415
XFU1608	12	08	1/2"	1"-14	30	63	30			415
XFU1908	12	08	1/2"	1 3/16"-12	33	66	36			415
XFU1610	16	10	5/8"	1"-14	30	66	30			350
XFU1910	16	10	5/8"	1 3/16"-12	33	69	36			350
XFU1912	20	12	3/4"	1 3/16"-12	33,5	74,5	36			350
XFU2312	20	12	3/4"	1 7/16"-12	34,5	75,5	41			350
XFU2316	25	16	1"	1 7/16"-12	35,5	90,5	41			280
XFU2720	32	20	1 1/4"	1 11/16"-12	36	97	50			210
XFU3224	40	24	1 1/2"	2"-12	36,5	107	60			185

**ORFS90**

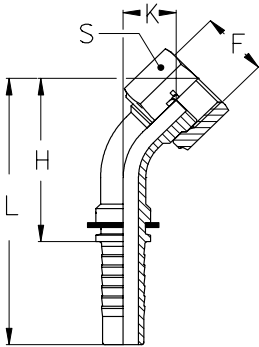
**90° ORFS SWEPT ELBOW - ONE PIECE - LOOSE NUT**  
**SLANGKOPPELING 90° ORFS - EEN STUK - LOSSE MOER**



TIEFFE Part. N.	Hose I.D. Ø interno tubo			Thread Filetto F	Dimensions (mm)					Maximum WP bar
	DN	Size	Inch		H	L	K	S		
XFU900904	6	04	1/4"	9/16"-18	24	52	21	17		450
XFU901104	6	04	1/4"	11/16"-16	24	52	24	22		450
XFU901105	8	05	5/16"	11/16"-16	31	59	26,5	22		350
XFU901106	10	06	3/8"	11/16"-16	34	64	29,5	22		445
XFU901306	10	06	3/8"	13/16"-16	34	64	32,5	24		445
XFU901308	12	08	1/2"	13/16"-16	41	74	35,5	24		415
XFU901608	12	08	1/2"	1"-14	41	74	39	30		415
XFU901908	12	08	1/2"	1 3/16"-12	41	74	42	36		415
XFU901610	16	10	5/8"	1"-14	49	85	43,5	30		350
XFU901910	16	10	5/8"	1 3/16"-12	49	85	46,5	36		350
XFU901912	20	12	3/4"	1 3/16"-12	58	99	52	36		350
XFU902312	20	12	3/4"	1 7/16"-12	58	99	56	41		350
XFU902316	25	16	1"	1 7/16"-12	74	129	61,5	41		280
XFU902720	32	20	1 1/4"	1 11/16"-12	92	153	73,5	50		210
XFU903224	40	24	1 1/2"	2"-12	108	179	82,5	60		185

**ORFS45**

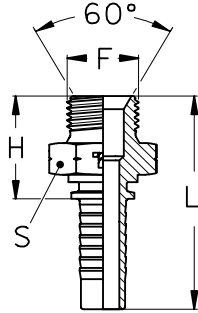
**45° ORFS SWEPT ELBOW - ONE PIECE - LOOSE NUT**  
**SLANGKOPPELING 45° ORFS - EEN STUK - LOSSE MOER**



TIEFFE Part. N.	Hose I.D. <i>Ø interno tubo</i>			Thread <i>Filetto</i>	Dimensions <i>(mm)</i>					Maximum WP  bar
	DN	Size	Inch	F	H	L	K	S		
<b>XFU450904</b>	6	04	1/4"	9/16"-18	35,5	64	11,5	17		450
<b>XFU451104</b>	6	04	1/4"	11/16"-16	37	65,5	13	22		450
<b>XFU451105</b>	8	05	5/16"	11/16"-16	44,5	73	14	22		350
<b>XFU451106</b>	10	06	3/8"	11/16"-16	48,5	79	14,5	22		445
<b>XFU451306</b>	10	06	3/8"	13/16"-16	51	81,5	17	24		445
<b>XFU451308</b>	12	08	1/2"	13/16"-16	58	91	18,5	24		415
<b>XFU451608</b>	12	08	1/2"	1"-14	60	93	21	30		415
<b>XFU451908</b>	12	08	1/2"	1 3/16"-12	62,5	95,5	23	36		415
<b>XFU451610</b>	16	10	5/8"	1"-14	73,5	109,5	21	30		350
<b>XFU451910</b>	16	10	5/8"	1 3/16"-12	75,7	111,5	23,5	36		350
<b>XFU451912</b>	20	12	3/4"	1 3/16"-12	82,5	123,5	29	36		350
<b>XFU452312</b>	20	12	3/4"	1 7/16"-12	85,5	126,5	32	41		350
<b>XFU452316</b>	25	16	1"	1 7/16"-12	103	157,5	34,5	41		280
<b>XFU452720</b>	32	20	1 1/4"	1 11/16"-12	127	187,5	43	50		210
<b>XFU453224</b>	40	24	1 1/2"	2"-12	141	219,5	45	60		185

**AGM**

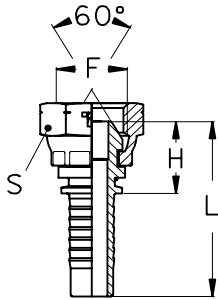
**METRIC MALE - 60° CONE SEAT**  
**SLANGKOPPELING BU.DR. METRISCH - CONUS 60°**



TIEFFE Part. N.	Hose I.D. Ø interno tubo			Thread Filetto	Dimensions (mm)					
	DN	Size	Inch	F	H	L	S			
<b>XM61003</b>	5	03	3/16"	M10x1	19	45	14			
<b>XM61203</b>	5	03	3/16"	M12x1,5	24	49	17			
<b>XM61004</b>	6	04	1/4"	M10x1	20	48	14			
<b>XM61204</b>	6	04	1/4"	M12x1,5	24	52	17			
<b>XM61404</b>	6	04	1/4"	M14x1,5	25	53	19			
<b>XM61604</b>	6	04	1/4"	M16x1,5	26	54	22			
<b>XM61804</b>	6	04	1/4"	M18x1,5	27	55	24			
<b>XM61405</b>	8	05	5/16"	M14x1,5	25	53	19			
<b>XM61605</b>	8	05	5/16"	M16x1,5	26	54	22			
<b>XM61805</b>	8	05	5/16"	M18x1,5	27	55	24			
<b>XM61406</b>	10	06	3/8"	M14x1,5	25	55	19			
<b>XM61606</b>	10	06	3/8"	M16x1,5	26	56	22			
<b>XM61806</b>	10	06	3/8"	M18x1,5	27	57	24			
<b>XM62006</b>	10	06	3/8"	M20x1,5	29	59	25			
<b>XM62206</b>	10	06	3/8"	M22x1,5	29	59	27			
<b>XM61808</b>	12	08	1/2"	M18x1,5	28	60	24			
<b>XM62008</b>	12	08	1/2"	M20x1,5	29	62	25			
<b>XM62208</b>	12	08	1/2"	M22x1,5	29	62	27			
<b>XM62408</b>	12	08	1/2"	M24x1,5	30	63	30			
<b>XM62608</b>	12	08	1/2"	M26x1,5	33	66	32			
<b>XM62610</b>	16	10	5/8"	M26x1,5	32	68	32			
<b>XM62612</b>	20	12	3/4"	M26x1,5	33	74	32			
<b>XM63012</b>	20	12	3/4"	M30x1,5	34	75	36			
<b>XM63816</b>	25	16	1"	M38x1,5	37	92	46			
<b>XM64520</b>	32	20	1 1/4"	M45x1,5	38	99	50			

**DKM**

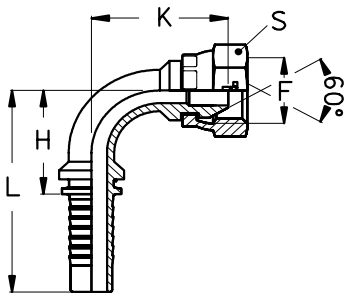
**METRIC FEMALE - 60° CONE - CRIMPED NUT**  
**SLANGKOPPELING METRISCH - CONUS 60° - GEPERSTE MOER**



TIEFFE Part. N.	Hose I.D. Ø interno tubo			Thread Filetto F	Dimensions (mm)					
	DN	Size	Inch		H	L	S			
XF61003	5	4,8	3/16"	M10x1	19	44	14			
XF61203	5	4,8	3/16"	M12x1,5	19	44	15			
XF61004	6	6,3	1/4"	M10X1	19	47	14			
XF61204	6	6,3	1/4"	M12x1,5	19	47	15			
XF61404	6	6,3	1/4"	M14x1,5	18	47	17			
XF61604	6	6,3	1/4"	M16x1,5	20	49	22			
XF61804	6	6,3	1/4"	M18x1,5	20	49	22			
XF61405	8	7,9	5/16"	M14x1,5	18	47	17			
XF61605	8	7,9	5/16"	M16x1,5	20	49	22			
XF61805	8	7,9	5/16"	M18x1,5	20	49	22			
XF61406	10	9,5	3/8"	M14x1,5	18	49	17			
XF61606	10	9,5	3/8"	M16x1,5	20	51	22			
XF61806	10	9,5	3/8"	M18x1,5	20	51	22			
XF62006	10	9,5	3/8"	M20x1,5	22	53	27			
XF62206	10	9,5	3/8"	M22x1,5	22	53	27			
XF61808	12	12,7	1/2"	M18x1,5	21	54	22			
XF62008	12	12,7	1/2"	M20x1,5	23	56	27			
XF62208	12	12,7	1/2"	M22x1,5	23	56	27			
XF62408	12	12,7	1/2"	M24x1,5	23	56	30			
XF62608	12	12,7	1/2"	M26x1,5	25	58	32			
XF62610	16	15,9	5/8"	M26x1,5	25	61	32			
XF62612	20	19,1	3/4"	M26x1,5	26	67	32			
XF63012	20	19,1	3/4"	M30x1,5	26	67	36			
XF63816	25	25,4	1"	M38x1,5	30	85	46			
XF64520	32	31,8	1 1/4"	M45x1,5	34	95	50			

**DKM90**

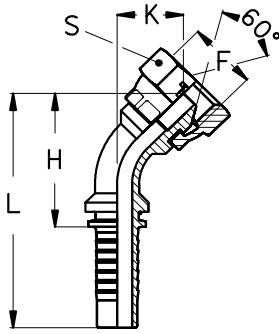
**METRIC 90° SWEEP ELBOW - 60° CONE - ONE PIECE - CRIMPED NUT**  
**SLANGKOPPELING 90° METRISCH - CONUS 60° - 1 STUK - GEPERSTE MOER**



TIEFFE Part. N.	Hose I.D. Ø interno tubo			Thread Filetto F	Dimensions (mm)					
	DN	Size	Inch		H	L	K	S		
XF6901003	5	4,8	3/16"	M10x1	21	47	25	14		
XF6901203	5	4,8	3/16"	M12x1,5	21	47	28	15		
XF6901004	6	6,3	1/4"	M10X1	24	52	16	14		
XF6901204	6	6,3	1/4"	M12x1,5	24	52	28	15		
XF6901404	6	6,3	1/4"	M14x1,5	24	52	28	17		
XF6901604	6	6,3	1/4"	M16x1,5	24	52	31	22		
XF6901804	6	6,3	1/4"	M18x1,5	24	52	31	22		
XF6901405	8	7,9	5/16"	M14x1,5	31	59	31,5	17		
XF6901605	8	7,9	5/16"	M16x1,5	31	59	33,5	22		
XF6901805	8	7,9	5/16"	M18x1,5	31	59	33,5	22		
XF6901406	10	9,5	3/8"	M14x1,5	34	64	35,5	17		
XF6901606	10	9,5	3/8"	M16x1,5	34	64	40,5	22		
XF6901806	10	9,5	3/8"	M18x1,5	34	64	40,5	22		
XF6902006	10	9,5	3/8"	M20x1,5	34	64	40,5	27		
XF6902206	10	9,5	3/8"	M22x1,5	34	64	40,5	27		
XF6901808	12	12,7	1/2"	M18x1,5	41	74	42	22		
XF6902008	12	12,7	1/2"	M20x1,5	41	74	44	27		
XF6902208	12	12,7	1/2"	M22x1,5	41	74	44	27		
XF6902408	12	12,7	1/2"	M24x1,5	41	74	45,5	30		
XF6902608	12	12,7	1/2"	M26x1,5	41	74	49,5	32		
XF6902610	16	15,9	5/8"	M26x1,5	49	85	54,5	32		
XF6902612	20	19,1	3/4"	M26x1,5	58	99	60,5	32		
XF6903012	20	19,1	3/4"	M30x1,5	58	99	65	36		
XF6903816	25	25,4	1"	M38x1,5	74	129	79	46		
XF6904520	32	31,8	1 1/4"	M45x1,5	92	179	89	50		

**DKM45**

**METRIC 45° SWEEP ELBOW - 60° CONE - ONE PIECE - CRIMPED NUT**  
**SLANGKOPPELING 45° METRISCH - CONUS 60° - 1 STUK - MOER**  
**GEPERST**

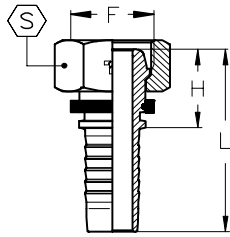


TIEFFE Part. N.	Hose I.D. Ø interno tubo			Thread Filetto	Dimensions (mm)					Maximum WP
	DN	Size	Inch	F	H	L	K	S		bar
XF6451003	5	4,8	3/16"	M10x1	36	61,5	14	14		
XF6451203	5	4,8	3/16"	M12x1,5	37,5	63	15,5	15		
XF6451004	6	6,3	1/4"	M10X1	39	67,5	15	14		
XF6451204	6	6,3	1/4"	M12x1,5	40	68,5	16,5	15		
XF6451404	6	6,3	1/4"	M14x1,5	40	68,5	16,5	17		
XF6451604	6	6,3	1/4"	M16x1,5	42,5	71	18,5	22		
XF6451804	6	6,3	1/4"	M18x1,5	42,5	71	18,5	22		
XF6451405	8	7,9	5/16"	M14x1,5	48	76,5	18	17		
XF6451605	8	7,9	5/16"	M16x1,5	49,5	78	19,5	22		
XF6451805	8	7,9	5/16"	M18x1,5	49,5	78	19,5	22		
XF6451406	10	9,5	3/8"	M14x1,5	53	83,5	19	17		
XF6451606	10	9,5	3/8"	M16x1,5	53,5	84	19,5	22		
XF6451806	10	9,5	3/8"	M18x1,5	53,5	84	19,5	22		
XF6452006	10	9,5	3/8"	M20x1,5	56,5	87	22,5	27		
XF6452206	10	9,5	3/8"	M22x1,5	56,5	87	22,5	27		
XF6451808	12	12,7	1/2"	M18x1,5	62,5	95,5	23	22		
XF6452008	12	12,7	1/2"	M20x1,5	64	97	24,5	27		
XF6452208	12	12,7	1/2"	M22x1,5	64	97	24,5	27		
XF6452408	12	12,7	1/2"	M24x1,5	65	98	25,5	30		
XF6452608	12	12,7	1/2"	M26x1,5	67,5	101	28	32		
XF6452610	16	15,9	5/8"	M26x1,5	81	117	29	32		
XF6452612	20	19,1	3/4"	M26x1,5	88,5	130	35	32		
XF6453012	20	19,1	3/4"	M30x1,5	91	132	38,5	36		
XF6453816	25	25,4	1"	M38x1,5	114	169	46	46		
XF6454520	32	31,8	1 1/4"	M45x1,5	138	199	54	50		

**DIN 20078/3868**

**DKL**

**METRIC FEMALE - MULTISEAL**  
METRISCH WARTEL - MULISEAL

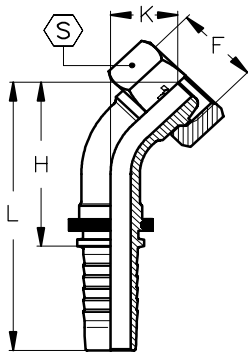


TIEFFE Part.N.	Hose I.D. Ø interno tubo			Thread Filettatura	Tube	Dimensions (mm)				Maximum W.P.	
	DN	Size	Inch	F	mm	H	L	S		bar	PSI
<b>XFE140804</b>	6	04	1/4"	M14x1,5	8	20	48	17		280	4000
<b>XFE161004</b>	8	05	5/16"	M16x1,5	10	20	48	19		280	4000
<b>XFE181206</b>	10	06	3/8"	M18x1,5	12	20	50	22		280	4000
<b>XFE221508</b>	12	08	1/2"	M22x1,5	15	21	54	27		280	4000
<b>XFE261810</b>	16	10	5/8"	M26x1,5	18	23	58	32		210	3000

**DIN 20078/3868**

**DKL45**

**45° METRIC SWEPT ELBOW - MULTISEAL**  
SLANGKOPPELING BOCHT 45° METRISCH - MULTISEAL

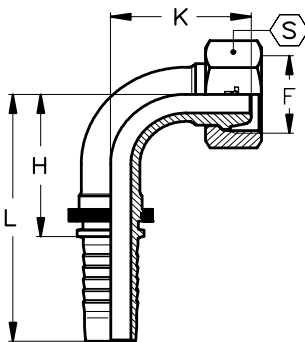


TIEFFE Part.N.	Hose I.D. Ø interno tubo			Thread Filettatura	Tube	Dimensions (mm)				Maximum W.P.	
	DN	Size	Inch	F	mm	H	L	K	S	bar	PSI
<b>XFE45140804</b>	6	04	1/4"	M14x1,5	8	35	63	13	17	280	4000
<b>XFE45161005</b>	8	05	5/16"	M16x1,5	10	37	65	15	19	280	4000
<b>XFE45181206</b>	10	06	3/8"	M18x1,5	12	39	69	15	22	280	4000
<b>XFE45221508</b>	12	08	1/2"	M22x1,5	15	45	78	17	27	280	4000
<b>XFE45261810</b>	16	10	5/8"	M26x1,5	18	52	87	20	32	210	3000

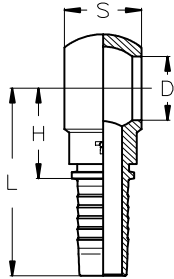
**DIN 20078/3868**

**DKL90**

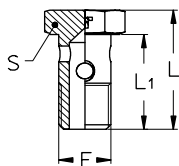
**90° METRIC SWEPT ELBOW - MULTISEAL**  
SLANGKOPPELING 90° METRISCH - MULTISEAL



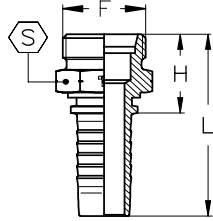
TIEFFE Part.N.	Hose I.D. Ø interno tubo			Thread Filettatura	Tube	Dimensions (mm)				Maximum W.P.	
	DN	Size	Inch	F	mm	H	L	K	S	bar	PSI
<b>XFE90140804</b>	6	04	1/4"	M14x1,5	8	29	57	27	17	280	4000
<b>XFE90161005</b>	8	05	5/16"	M16x1,5	10	31	59	30	19	280	4000
<b>XFE90181206</b>	10	06	3/8"	M18x1,5	12	31	61	30	22	280	4000
<b>XFE90221508</b>	12	08	1/2"	M22x1,5	15	37	70	36	27	280	4000
<b>XFE90261810</b>	16	10	5/8"	M26x1,5	18	45	81	42	32	210	3000

**METRIC BANJO - ONEPIECE**  
 METRISCHE BANJO - UIT 1 DEEL


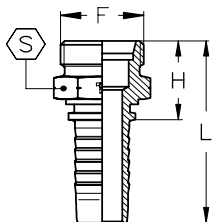
TIEFFE Part.N.	Hose I.D. Ø interno tubo			Thread Filettatura	Dimensions (mm)			
	DN	Size	Inch	F	H	L	D	S
XQB0302	5	03	3/16"	M10x1	20	45	10,2	10
XQE1203	5	03	3/16"	M12x1,5	21,1	46,1	12,1	12
XQE1403	5	03	3/16"	M14x1,5	22,6	47,6	14,2	14
XQB0204	6	04	1/4"	M10x1	23	51	10,2	10
XQE1204	6	04	1/4"	M12x1,5	23	51	12,1	12
XQE1404	6	04	1/4"	M14x1,5	23	51	14	14
XQE1604	6	04	1/4"	M16x1,5	26,5	54,5	16,2	17,5
XQE1804	6	04	1/4"	M18x1,5	28,5	56,5	18,2	20,5
XQE1205	8	05	5/16"	M12x1,5	23,5	51,5	12,1	12
XQE1405	8	05	5/16"	M14x1,5	24	52	14,2	14
XQE1605	8	05	5/16"	M16x1,5	26,5	54,5	16,2	17,5
XQE1805	8	05	5/16"	M18x1,5	28,5	56,5	18,2	20,5
XQE1406	10	06	3/8"	M14x1,5	24	54,5	14,2	14
XQE1606	10	06	3/8"	M16x1,5	24	54,5	16,2	17,5
XQE1806	10	06	3/8"	M18x1,5	27	57,5	18,2	20,5
XQE2006	10	06	3/8"	M20x1,5	32	62,5	20,2	23
XQE2206	10	06	3/8"	M22x1,5	32	62,5	22,2	22,5
XQB1208	12	08	1/2"	M26x1,5	39	72	26,5	29,5
XQE1808	12	08	1/2"	M18x1,5	28,1	61,1	18,2	20,5
XQE2008	12	08	1/2"	M20x1,5	28,5	61,5	20,2	23
XQE2208	12	08	1/2"	M22x1,5	28,5	61,5	22,2	22,5
XQB1210	16	10	5/8"	M26x1,5	34,7	70,5	26,5	29,5
XQE2210	16	10	5/8"	M22x1,5	27,2	63	22,2	22,5
XQB1212	20	12	3/4"	M26x1,5	37,5	78	26,5	29,5
XQE3012	20	12	3/4"	M30x1,5	41,5	82	30,2	30
XQE3016	25	16	1"	M30x1,5	43	94	30,2	37

**METRIC BANJO BOLT**  
 METRISCHE BANJO BOUT


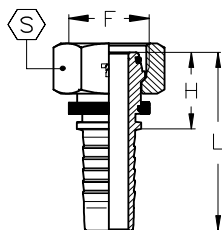
TIEFFE Part.N.	Thread Filettatura	Dimensions (mm)		
		F	L	L1
QME10	M10x1	26	21,5	14
QME12	M12x1,5	31	25,5	17
QME14	M14x1,5	37,5	30,5	19
QME16	M16x1,5	40	32,5	22
QME18	M18x1,5	44	36,5	24
QME20	M20x1,5	48	39,5	27
QME22	M22x1,5	50	41,5	28
QME26	M26x1,5	58	48,5	32
QME30	M30x1,5	64	53	36

**ISO 12151-2**  
**DIN 20078**
**CEL**
**METRIC MALE - 24° CONE SEAT - LIGHT DUTY**  
 METRISCHE BU.DR. KOPPELING - 24° CONUS - LICHTE SERIE


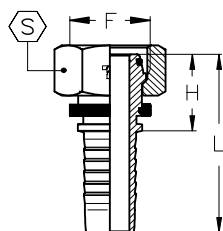
TIEFFE Part.N.	Hose I.D. Ø interno tubo			Thread Filettatura	Tube	Dimensions (mm)					Maximum W.P.	
	DN	Size	Inch	F	mm	H	L	S			bar	PSI
XME120603	5	03	3/16"	M12x1,5	6	21	46	12			280	4000
XME140803	5	03	3/16"	M14x1,5	8	21	46	14			280	4000
XME120604	6	04	1/4"	M12x1,5	6	21	49	12			280	4000
XME140804	6	04	1/4"	M14x1,5	8	21	49	14			280	4000
XME161004	6	04	1/4"	M16x1,5	10	23	51	17			280	4000
XME181204	6	04	1/4"	M18x1,5	12	23	51	19			280	4000
XME161005	8	05	5/16"	M16x1,5	10	23	51	17			280	4000
XME181205	8	05	5/16"	M18x1,5	12	23	51	19			280	4000
XME161006	10	06	3/8"	M16x1,5	10	23	53	17			280	4000
XME181206	10	06	3/8"	M18x1,5	12	23	53	19			280	4000
XME221506	10	06	3/8"	M22x1,5	15	25	56	22			280	4000
XME221508	12	08	1/2"	M22x1,5	15	26	59	22			280	4000
XME261808	12	08	1/2"	M26x1,5	18	28	61	27			210	3000
XME261810	16	10	5/8"	M26x1,5	18	28	64	27			210	3000
XME302210	16	10	5/8"	M30x2	22	30	66	30			210	3000
XME261812	20	12	3/4"	M26x1,5	18	29	70	27			210	3000
XME302212	20	12	3/4"	M30x2	22	31	72	30			210	3000
XME362816	25	16	1"	M36x2	28	35	86	36			165	2350
XME453520	32	20	1 1/4"	M45x2	35	40	97	46			125	1800
XME524224	40	24	1 1/2"	M52x2	42	42	106	55			100	1450

**ISO 12151-2**  
**DIN 20078**
**CES**
**METRIC MALE - 24° CONE SEAT - HEAVY DUTY**  
 METRISCHE BU.DR. KOPPELING - 24° CONUS - ZWARE SERIE


TIEFFE Part.N.	Hose I.D. Ø interno tubo			Thread Filettatura	Tube	Dimensions (mm)					Maximum W.P.	
	DN	Size	Inch	F	mm	H	L	S			bar	PSI
XME140603	5	03	3/16"	M14x1,5	6	23	48	14			420	6000
XME160803	5	03	3/16"	M16x1,5	8	23	48	17			420	6000
XME140604	6	04	1/4"	M14x1,5	6	23	51	14			450	6500
XME160804	6	04	1/4"	M16x1,5	8	23	51	17			450	6500
XME181004	6	04	1/4"	M18x1,5	10	24	52	19			450	6500
XME201204	6	04	1/4"	M20x1,5	12	25	53	22			450	6500
XME181005	8	05	5/16"	M18x1,5	10	24	52	19			350	5000
XME201205	8	05	5/16"	M20x1,5	12	25	53	22			350	5000
XME181006	10	06	3/8"	M18x1,5	10	24	55	19			450	6500
XME201206	10	06	3/8"	M20x1,5	12	25	56	22			450	6500
XME221406	10	06	3/8"	M22x1,5	14	27	58	22			450	6500
XME221408	12	08	1/2"	M22x1,5	14	28	61	22			420	6000
XME241608	12	08	1/2"	M24x1,5	16	29	62	24			420	6000
XME302010	16	10	5/8"	M30x2	20	32	68	30			350	5000
XME302012	20	12	3/4"	M30x2	20	33	74	30			350	5000
XME362512	20	12	3/4"	M36x2	25	37	78	36			350	5000
XME362516	25	16	1"	M36x2	25	39	90	36			280	4000
XME423016	25	16	1"	M42x2	30	43	94	46			280	4000
XME423020	32	20	1 1/4"	M42x2	30	44	101	46			210	3000
XME523820	32	20	1 1/4"	M52x2	38	48	105	55			210	3000
XME523824	40	24	1 1/2"	M52x2	38	48	112	55			185	2600

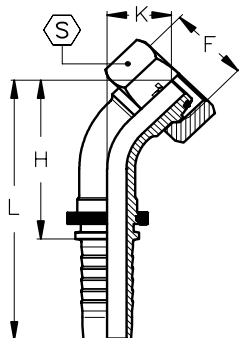
**ISO 12151-2  
 DIN 20078**
**DKOL**
**METRIC FEMALE - 24° O'RING CONE - LIGHT DUTY**  
 METRISCHE WARTELKOPPELING - CONUS 24° O'RING - LICHTE SERIE

 \* Swaged nut  
 \*\* Tieffe nut

TIEFFE Part.N.	Hose I.D. Ø interno tubo			Thread Filettatura	Tube	Dimensions (mm)					Maximum W.P.	
	DN	Size	Inch	F	mm	H	L	S	O'Ring	bar	PSI	
XFE0120603	5	03	3/16"	M12x1,5	6	21	46	14	5x1	280	4000	
XFE0140803	5	03	3/16"	M14x1,5	8	21	46	17	6x1,5	280	4000	
XFE0120604	6	04	1/4"	M12x1,5	6	23	51	17	5x1	280	4000	
XFE0140804	6	04	1/4"	M14x1,5	8	22	50	17	6x1,5	280	4000	
XFE0161004	6	04	1/4"	M16x1,5	10	24	52	19	7,5x1,5	280	4000	
XFE0181204	6	04	1/4"	M18x1,5	12	24	52	22	9x1,5	280	4000	
XFE0161005	8	05	5/16"	M16x1,5	10	24	52	19	7,5x1,5	280	4000	
XFE0181205	8	05	5/16"	M18x1,5	12	24	52	22	9x1,5	280	4000	
XFE0161006	10	06	3/8"	M16x1,5	10	23	54	19	7,5x1,5	280	4000	
XFE0181206	10	06	3/8"	M18x1,5	12	24	54	22	9x1,5	280	4000	
XFE0221506	10	06	3/8"	M22x1,5	15	24	54	27	12x2	280	4000	
XFE0221508	12	08	1/2"	M22x1,5	15	24	57	27	12x2	280	4000	
XFE0261808	12	08	1/2"	M26x1,5	18	26	59	32	15x2	210	3000	
XFE0261810	16	10	5/8"	M26x1,5	18	27	62	32	15x2	210	3000	
XFE0302210	16	10	5/8"	M30x2	22	28	64	36	20x2	210	3000	
XFE0261812	20	12	3/4"	M26x1,5	18	34	75	32	15x2	210	3000	
XFE0302212	20	12	3/4"	M30x2	22	31	71	36	20x2	210	3000	
XFE0362816	25	16	1"	M36x2	28	32	83	41	26x2	165	2350	
XFE0453520	32	20	1 1/4"	M45x2	35	36	94	50	32x2,5	125	1800	
XFE0524224	40	24	1 1/2"	M52x2	42	37	102	60	38x2,5	100	1450	

**ISO 12151-2  
 DIN 20078**
**DKOS**
**METRIC FEMALE - 24° O'RING CONE - HEAVY DUTY**  
 METRISCHE WARTELKOPPELING - CONUS 24° O'RING - ZWARE SERIE


\* Swaged nut

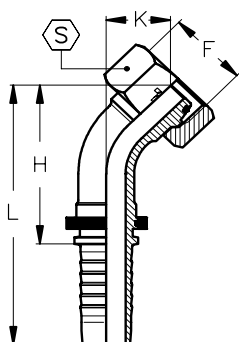
TIEFFE Part.N.	Hose I.D. Ø interno tubo			Thread Filettatura	Tube	Dimensions (mm)					Maximum W.P.	
	DN	Size	Inch	F	mm	H	L	S	O'Ring	bar	PSI	
XFE0140603	5	03	3/16"	M14x1,5	6	21	46	17	5x1	420	6000	
XFE0160803	5	03	3/16"	M16x1,5	8	21	46	19	6x1,5	420	6000	
XFE0140604	6	04	1/4"	M14x1,5	6	23	51	17	5x1	450	6500	
XFE0160804	6	04	1/4"	M16x1,5	8	22	50	19	6x1,5	450	6500	
XFE0181004	6	04	1/4"	M18x1,5	10	24	52	22	7,5x1,5	450	6500	
XFE0201204	6	04	1/4"	M20x1,5	12	24	52	24	9x1,5	450	6500	
XFE0181005	8	05	5/16"	M18x1,5	10	24	52	22	7,5x1,5	350	5000	
XFE0201205	8	05	5/16"	M20x1,5	12	24	52	24	9x1,5	350	5000	
XFE0181006	10	06	3/8"	M18x1,5	10	25	55	22	7,5x1,5	450	6500	
XFE0201206	10	06	3/8"	M20x1,5	12	24	54	24	9x1,5	450	6500	
XFE0221406	10	06	3/8"	M22x1,5	14	28	58	27	10x2	450	6500	
XFE0221408	12	08	1/2"	M22x1,5	14	28	61	27	10x2	420	6000	
XFE0241608	12	08	1/2"	M24x1,5	16	29	62	30	12x2	420	6000	
XFE0302010	16	10	5/8"	M30x2	20	33	69	36	16,3x2,4	350	5000	
XFE0302012	20	12	3/4"	M30x2	20	36	76	36	16,3x2,4	350	5000	
XFE0362512	20	12	3/4"	M36x2	25	38	78	46	20,3x2,4	350	5000	
XFE0362512SW41	20	12	3/4"	M36x2	25	38	78	41	20,3x2,4	350	5000	
XFE0362516	25	16	1"	M36x2	25	40	91	46	22x2	280	4000	
XFE0423016	25	16	1"	M42x2	30	40	91	50	25,3x2,4	280	4000	
XFE0423020	32	20	1 1/4"	M42x2	30	41	99	50	25,3x2,4	210	3000	
XFE0523820	32	20	1 1/4"	M52x2	38	45	103	60	33,3x2,4	210	3000	
XFE0523824	40	24	1 1/2"	M52x2	38	46	110	60	33,3x2,4	185	2600	

**ISO 12151-2**  
**DIN 20078**
**DKOL45**
**45° METRIC SWEEP ELBOW - 24° O'RING CONE - LIGHT DUTY**  
**METRISCHE BOCHT 45° - 24° CONUS MET ORING - LICHTE SERIE**


TIEFFE Part.N.	Hose I.D. Ø interno tubo			Thread Filettatura	Tube	Dimensions (mm)					Maximum W.P.	
	DN	Size	Inch	F	mm	H	L	K	S	O'Ring	bar	PSI
XFEO45120603	5	03	3/16"	M12x1,5	6	34	59	14	14	5x1	280	4000
XFEO45140803	5	03	3/16"	M14x1,5	8	35	60	14	17	6x1,5	280	4000
XFEO45120604	6	04	1/4"	M12x1,5	6	35	63	14	17	5x1	280	4000
XFEO45140804	6	04	1/4"	M14x1,5	8	36	64	14	17	6x1,5	280	4000
XFEO45161004	6	04	1/4"	M16x1,5	10	38	66	16	19	7,5x1,5	280	4000
XFEO45181204	6	04	1/4"	M18x1,5	12	39	67	17	22	9x1,5	280	4000
XFEO45161005	8	05	5/16"	M16x1,5	10	39	67	17	19	7,5x1,5	280	4000
XFEO45181205	8	05	5/16"	M18x1,5	12	39	67	18	22	9x1,5	280	4000
XFEO45161005	10	06	3/8"	M16x1,5	10	39	69	16	19	7,5x1,5	280	4000
XFEO45181206	10	06	3/8"	M18x1,5	12	40	71	18	22	9x1,5	280	4000
XFEO45221506	10	06	3/8"	M22x1,5	15	42	72	19	27	12x2	280	4000
XFEO45221508	12	08	1/2"	M22x1,5	15	46	79	19	27	12x2	280	4000
XFEO45261808	12	08	1/2"	M26x1,5	18	47	80	21	32	15x2	210	3000
XFEO45261810	16	10	5/8"	M26x1,5	18	53	89	22	32	15x2	210	3000
XFEO45302210	16	10	5/8"	M30x2	22	54	90	23	36	20x2	210	3000
XFEO45261812	20	12	3/4"	M26x1,5	18	66	107	29	32	15x2	210	3000
XFEO45302212	20	12	3/4"	M30x2	22	62	103	25	36	20x2	210	3000
XFEO45362816	25	16	1"	M36x2	28	80	131	31	41	26x2	165	2350
XFEO45453520	32	20	1 1/4"	M45x2	35	96	154	40	50	32x2,5	125	1800
XFEO45524224	40	24	1 1/2"	M52x2	42	115	179	48	60	38x2,5	100	1450

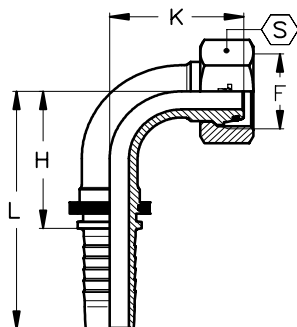
\* Swaged nut

\*\* Tieffe nut

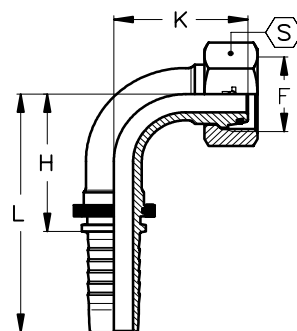
**ISO 12151-2**  
**DIN 20078**
**DKOS45**
**45° METRIC SWEEP ELBOW - 24° O'RING CONE - HEAVY DUTY**  
**METRISCHE BOCHT 45° - 24° CONUS MET ORING - ZWARE SERIE**


TIEFFE Part.N.	Hose I.D. Ø interno tubo			Thread Filettatura	Tube	Dimensions (mm)					Maximum W.P.	
	DN	Size	Inch	F	mm	H	L	K	S	O'Ring	bar	PSI
XFEO45140603	5	03	3/16"	M14x1,5	6	34	59	14	17	5x1	420	6000
XFEO45160803	5	03	3/16"	M16x1,5	8	35	60	14	19	6x1,5	420	6000
XFEO45140604	6	04	1/4"	M14x1,5	6	35	63	14	17	5x1	450	6500
XFEO45160804	6	04	1/4"	M16x1,5	8	36	64	14	19	6x1,5	450	6500
XFEO45181004	6	04	1/4"	M18x1,5	10	38	66	16	22	7,5x1,5	450	6500
XFEO45201204	6	04	1/4"	M20x1,5	12	39	67	17	24	9x1,5	450	6500
XFEO45181005	8	05	5/16"	M18x1,5	10	39	67	17	22	7,5x1,5	350	5000
XFEO45201205	8	05	5/16"	M20x1,5	12	39	67	18	24	9x1,5	350	5000
XFEO45181006	10	06	3/8"	M18x1,5	10	40	70	17	22	7,5x1,5	450	6500
XFEO45201206	10	06	3/8"	M20x1,5	12	40	71	18	24	9x1,5	450	6500
XFEO45221406	10	06	3/8"	M22x1,5	14	42	72	19	27	10x2	450	6500
XFEO45221408	12	08	1/2"	M22x1,5	14	46	79	20	27	10x2	420	6000
XFEO45241608	12	08	1/2"	M24x1,5	16	47	80	21	30	12x2	420	6000
XFEO45302010	16	10	5/8"	M30x2	20	56	92	25	36	16,3x2,4	350	5000
XFEO45302012	20	12	3/4"	M30x2	20	64	105	27	36	16,3x2,4	350	5000
XFEO45362512	20	12	3/4"	M36x2	25	64	105	28	46	20,3x2,4	350	5000
XFEO45362512SW41	20	12	3/4"	M36x2	25	64	105	28	41	20,3x2,4	350	5000
XFEO45362516	25	16	1"	M36x2	25	82	133	34	41	22x2	280	4000
XFEO45423016	25	16	1"	M42x2	30	80	131	31	50	25,3x2,4	280	4000
XFEO45423020	32	20	1 1/4"	M42x2	30	96	154	41	50	25,3x2,4	210	3000
XFEO45523820	32	20	1 1/4"	M52x2	38	94	152	38	60	33,3x2,4	210	3000
XFEO45523824	40	24	1 1/2"	M52x2	38	115	180	49	60	33,3x2,4	185	2600

\* Swaged nut

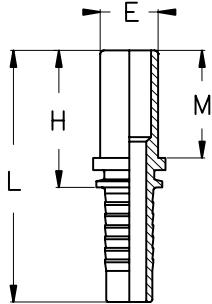
**ISO 12151-2**  
**DIN 20078**
**DKOL90**
**90° METRIC SWEPT ELBOW - 24° O'RING CONE - LIGHT DUTY**  
 METRISCHE BOCHT 90° - 24° CONUS MET ORING - LICHTE SERIE

 \* Swaged nut  
 \*\* Tieffe nut

TIEFFE Part.N.	Hose I.D. Ø interno tubo			Thread Filettatura	Tube	Dimensions (mm)					Maximum W.P.	
	DN	Size	Inch	F	mm	H	L	K	S	O'Ring	bar	PSI
XFEO90120603	5	03	3/16"	M12x1,5	6	27	52	28	14	5x1	280	4000
XFEO90140803	5	03	3/16"	M14x1,5	8	27	52	28	17	6x1,5	280	4000
XFEO90120604	6	04	1/4"	M12x1,5	6	26	53	26	17	5x1	280	4000
XFEO90140804	6	04	1/4"	M14x1,5	8	29	57	29	17	6x1,5	280	4000
XFEO90161004	6	04	1/4"	M16x1,5	10	29	57	30	19	7,5x1,5	280	4000
XFEO90181204	6	04	1/4"	M18x1,5	12	29	57	32	22	9x1,5	280	4000
XFEO90161005	8	05	5/16"	M16x1,5	10	31	59	33	19	7,5x1,5	280	4000
XFEO90181205	8	05	5/16"	M18x1,5	12	28	56	32	22	9x1,5	280	4000
XFEO90161006	10	06	3/8"	M16x1,5	10	31	61	31	19	7,5x1,5	280	4000
XFEO90181206	10	06	3/8"	M18x1,5	12	31	61	33	22	9x1,5	280	4000
XFEO90221506	10	06	3/8"	M22x1,5	15	31	61	35	27	12x2	280	4000
XFEO90221508	12	08	1/2"	M22x1,5	15	37	70	38	27	12x2	280	4000
XFEO90261808	12	08	1/2"	M26x1,5	18	37	70	40	32	15x2	210	3000
XFEO90261810	16	10	5/8"	M26x1,5	18	44	80	45	32	15x2	210	3000
XFEO90302210	16	10	5/8"	M30x2	22	44	80	47	36	20x2	210	3000
XFEO90261812	20	12	3/4"	M26x1,5	18	54	94	57	32	15x2	210	3000
XFEO90302212	20	12	3/4"	M30x2	22	54	94	52	36	20x2	210	3000
XFEO90362816	25	16	1"	M36x2	28	70	121	66	41	26x2	165	2350
XFEO90453520	32	20	1 1/4"	M45x2	35	84	141	83	50	32x2,5	125	1800
XFEO90524224	40	24	1 1/2"	M52x2	42	100	164	100	60	38x2,5	100	1450

**ISO 12151-2**  
**DIN 20078**
**DKOS90**
**90° METRIC SWEPT ELBOW - 24° O'RING CONE - HEAVY DUTY**  
 METRISCHE BOCHT 90° - 24° CONUS MET ORING - ZWARE SERIE


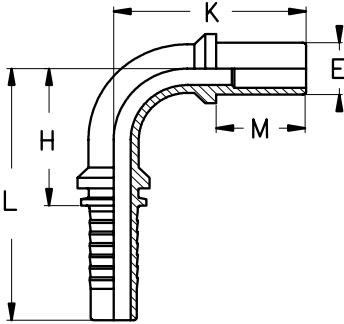
\* Swaged nut

TIEFFE Part.N.	Hose I.D. Ø interno tubo			Thread Filettatura	Tube	Dimensions (mm)					Maximum W.P.	
	DN	Size	Inch	F	mm	H	L	K	S	O'Ring	bar	PSI
XFEO90140603	5	03	3/16"	M14x1,5	6	27	52	28	17	5x1	420	6000
XFEO90160803	5	03	3/16"	M16x1,5	8	27	52	28	19	6x1,5	420	6000
XFEO90140604	6	04	1/4"	M14x1,5	6	25	53	26	17	5x1	450	6500
XFEO90160804	6	04	1/4"	M16x1,5	8	29	57	29	19	6x1,5	450	6500
XFEO90181004	6	04	1/4"	M18x1,5	10	29	57	30	22	7,5x1,5	450	6500
XFEO90201204	6	04	1/4"	M20x1,5	12	29	57	32	24	9x1,5	450	6500
XFEO90181005	8	05	5/16"	M18x1,5	10	31	59	33	22	7,5x1,5	350	5000
XFEO90201205	8	05	5/16"	M20x1,5	12	28	56	32	24	9x1,5	350	5000
XFEO90181006	10	06	3/8"	M18x1,5	10	30	61	33	22	7,5x1,5	450	6500
XFEO90201206	10	06	3/8"	M20x1,5	12	31	61	33	24	9x1,5	450	6500
XFEO90221406	10	06	3/8"	M22x1,5	14	34	64	37	27	10x2	450	6500
XFEO90221408	12	08	1/2"	M22x1,5	14	39	71	41	27	10x2	420	6000
XFEO90241608	12	08	1/2"	M24x1,5	16	39	71	42	30	12x2	420	6000
XFEO90302010	16	10	5/8"	M30x2	20	44	80	49	36	16,3x2,4	350	5000
XFEO90302012	20	12	3/4"	M30x2	20	54	94	55	36	16,3x2,4	350	5000
XFEO90362512	20	12	3/4"	M36x2	25	54	94	57	46	20,3x2,4	350	5000
XFEO90362512SW41	20	12	3/4"	M36x2	25	54	94	57	41	20,3x2,4	350	5000
XFEO90362516	25	16	1"	M36x2	25	70	121	70	46	22x2	280	4000
XFEO90423016	25	16	1"	M42x2	30	70	121	66	50	25,3x2,4	280	4000
XFEO90423020	32	20	1 1/4"	M42x2	30	84	141	84	50	25,3x2,4	210	3000
XFEO90523820	32	20	1 1/4"	M52x2	38	84	141	80	60	33,3x2,4	210	3000
XFEO90523824	40	24	1 1/2"	M52x2	38	100	164	101	60	33,3x2,4	185	2600



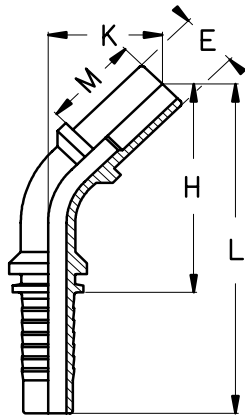
BEL BES	METRIC STANDPIPE METRISCHE STANDPIJP											
	TIEFFE Part. N.	Hose I.D. Ø interno tubo			E mm	Dimensions (mm)						Maximum WP bar
		DN	Size	Inch		H	L	M				
XEZ0603	5	03	3/16"	6	29,5	55	23					415
XEZ0803	5	03	3/16"	8	29,5	55	23					415
XEZ0604	6	04	1/4"	6	27,5	56	21					320
XEZ0804	6	04	1/4"	8	29,5	58	23					450
XEZ1004	6	04	1/4"	10	31,5	60	25					450
XEZ1204	6	04	1/4"	12	32,5	61	25					450
XEZ1005	8	05	5/16"	10	31,5	60	25					350
XEZ1205	8	05	5/16"	12	31,5	59	25					350
XEZ1006	10	06	3/8"	10	28,5	59	22					330
XEZ1206	10	06	3/8"	12	31,5	62	25					445
XEZ1406	10	06	3/8"	14	34,5	65	28					445
XEZ1506	10	06	3/8"	15	30,5	61	24					250
XEZ1408	12	08	1/2"	14	35,5	68,5	28					275
XEZ1508	12	08	1/2"	15	31,5	64,5	24					250
XEZ1608	12	08	1/2"	16	36,5	69,5	29					415
XEZ1808	12	08	1/2"	18	33,5	66,5	26					160
XEZ1810	16	10	5/8"	18	33,5	69,5	26					160
XEZ2010	16	10	5/8"	20	42,5	78,5	35					350
XEZ2210	16	10	5/8"	22	35,5	71,5	28					160
XEZ1812	20	12	3/4"	18	34,5	75,5	26					160
XEZ2012	20	12	3/4"	20	43,5	84,5	35					215
XEZ2212	20	12	3/4"	22	36,5	77,5	28					160
XEZ2512	20	12	3/4"	25	47,5	88,5	39					350
XEZ2516	25	16	1"	25	49	104	39					165
XEZ2816	25	16	1"	28	39	94	29					100
XEZ3016	25	16	1"	30	53	108	43					250
XEZ3020	32	20	1 1/4"	30	53,5	114,5	43					210
XEZ3520	32	20	1 1/4"	35	45,5	106,5	35					100
XEZ3820	32	20	1 1/4"	38	58,5	119,5	48					210
XEZ3824	40	24	1 1/2"	38	59,5	130	48					170
XEZ4224	40	24	1 1/2"	42	47,5	118	36					100

TIEFFE Part. N.	Hose I.D. <i>Ø interno tubo</i>		E mm	Dimensions (mm)				Maximum WP bar	
	DN	Size		H	L	K	M		
	<b>BEL 90</b>	<b>90° METRIC STANDPIPE - ONE PIECE</b>							
<b>BES 90</b>	<b>STANDPIJP METRISCH 90° - UIT 1 STUK</b>								
<b>XEZ900603</b>	5	03	3/16"	6	21	47	37,5	23	415
<b>XEZ900803</b>	5	03	3/16"	8	21	47	37,5	23	415
<b>XEZ900604</b>	6	04	1/4"	6	24	52	39	21	320
<b>XEZ900804</b>	6	04	1/4"	8	24	52	39	23	450
<b>XEZ901004</b>	6	04	1/4"	10	24	52	41	25	450
<b>XEZ901204</b>	6	04	1/4"	12	24	52	42,5	25	450
<b>XEZ901005</b>	8	05	5/16"	10	31	59	45	25	350
<b>XEZ901205</b>	8	05	5/16"	12	31	59	45	25	350
<b>XEZ901006</b>	10	06	3/8"	10	34	64	48	22	330
<b>XEZ901206</b>	10	06	3/8"	12	34	64	49	25	445
<b>XEZ901406</b>	10	06	3/8"	14	34	64	52	28	445
<b>XEZ901506</b>	10	06	3/8"	15	34	64	48	24	250
<b>XEZ901408</b>	12	08	1/2"	14	41	74	57,5	28	275
<b>XEZ901508</b>	12	08	1/2"	15	41	74	53,5	24	250
<b>XEZ901608</b>	12	08	1/2"	16	41	74	58,5	29	415
<b>XEZ901808</b>	12	08	1/2"	18	41	74	55,5	26	160
<b>XEZ901810</b>	16	10	5/8"	18	49	85	61,5	26	160
<b>XEZ902010</b>	16	10	5/8"	20	49	85	70,5	35	350
<b>XEZ902210</b>	16	10	5/8"	22	49	85	60	28	160
<b>XEZ901812</b>	20	12	3/4"	18	58	99	69	26	160
<b>XEZ902012</b>	20	12	3/4"	20	58	99	78	35	215
<b>XEZ902212</b>	20	12	3/4"	22	58	99	71	28	160
<b>XEZ902512</b>	20	12	3/4"	25	58	99	82	39	350
<b>XEZ902516</b>	25	16	1"	25	74	129	99	39	165
<b>XEZ902816</b>	25	16	1"	28	74	129	89	29	100
<b>XEZ903010</b>	25	16	1"	30	74	129	96	43	250
<b>XEZ903020</b>	32	20	1 1/4"	30	92	153	110	43	210
<b>XEZ903520</b>	32	20	1 1/4"	35	92	153	107	35	100
<b>XEZ903820</b>	32	20	1 1/4"	38	92	153	115	48	210
<b>XEZ903824</b>	40	24	1 1/2"	38	108	179	128	48	170
<b>XEZ904224</b>	40	24	1 1/2"	42	108	179	120	36	100



**BEL 45  
BES 45**

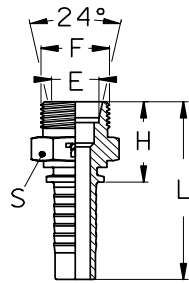
**45° METRIC STANDPIPE - ONE PIECE  
STANDPIJP METRISCH 45° - UIT 1 STUK**



TIEFFE Part. N.	Hose I.D. Ø interno tubo			E mm	Dimensions (mm)						Maximum WP bar
	DN	Size	Inch		H	L	K	M			
XEZ450603	5	03	3/16"	6	44,5	70	22,5	23			415
XEZ450803	5	03	3/16"	8	44,5	70	22,5	23			415
XEZ450604	6	04	1/4"	6	48	77	24	21			320
XEZ450804	6	04	1/4"	8	48	76,5	24	23			450
XEZ451004	6	04	1/4"	10	49,5	78	25,5	25			450
XEZ451204	6	04	1/4"	12	50,5	79	26,5	25			450
XEZ451005	8	05	5/16"	10	51,5	80	27,5	25			350
XEZ451205	8	05	5/16"	12	57,5	86	27,5	25			350
XEZ451006	10	06	3/8"	10	62	92,5	27,5	22			330
XEZ451206	10	06	3/8"	12	62,5	93	28,5	25			445
XEZ451406	10	06	3/8"	14	64,5	95	30,5	28			445
XEZ451506	10	06	3/8"	15	61,5	92,5	27,5	24			250
XEZ451408	12	08	1/2"	14	73,5	106,5	34	28			275
XDEZ451508	12	08	1/2"	15	70,5	103,5	31	24			250
XEZ451608	12	08	1/2"	16	74	107	34,5	29			415
XEZ451808	12	08	1/2"	18	72	105	32,5	26			160
XEZ451810	16	10	5/8"	18	86,5	122,5	34	26			160
XEZ452010	16	10	5/8"	20	92,5	128,5	40,5	35			350
XEZ452210	16	10	5/8"	22	85,5	121,5	33	28			160
XEZ451812	20	12	3/4"	18	94,5	135,5	41	26			160
XEZ452012	20	12	3/4"	20	101	141,5	47	35			215
XEZ452212	20	12	3/4"	22	96	137	42,5	28			160
XEZ452512	20	12	3/4"	25	104	144,5	50	39			350
XEZ452516	25	16	1"	25	131	186	63	39			165
XEZ452816	25	16	1"	28	124	178	56	29			100
XEZ453016	25	16	1"	30	127	181,5	58,5	43			250
XEZ453020	32	20	1 1/4"	30	153	213,5	69	43			210
XEZ453520	32	20	1 1/4"	35	153	214	69	35			100
XEZ453820	32	20	1 1/4"	38	156	217	72,5	48			210
XEZ453824	40	24	1 1/2"	38	184	254	79	48			170
XEZ454224	40	24	1 1/2"	42	175	246	71	36			100

**AGF**

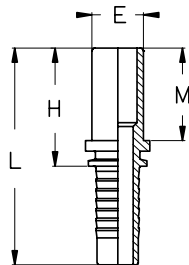
**METRIC MALE 24° CONE SEAT - FRENCH TYPE**  
**METRISCHE BU.DR. KOPPELING 24° CONUS - FRANSE SERIE**



TIEFFE Part. N.	Hose I.D. Ø interno tubo			Thread Filetto	Tube	Dimensions (mm)			
	DN	Size	Inch	F	mm	H	L	E	S
XMG201304	6	04	1/4"	M20x1,5	13,25	26,7	55,2	13,25	22
XMG201305	8	05	5/16"	M20x1,5	13,25	26,7	55,2	13,25	22
XMG201306	10	06	3/8"	M20x1,5	13,25	26,7	57,2	13,25	22
XMG241706	10	06	3/8"	M24x1,5	16,75	30,2	60,7	16,75	27
XMG241708	12	08	1/2"	M24x1,5	16,75	30,7	63,7	16,75	27
XMG302108	12	08	1/2"	M30x1,5	21,25	31,2	64,2	21,25	32
XMG302110	16	10	5/8"	M30x1,5	21,25	31,2	67,2	21,25	32
XMG302112	20	12	3/4"	M30x1,5	21,25	31,7	73,2	21,25	32
XMG362712	20	12	3/4"	M36x1,5	26,75	31,7	73,2	26,75	36
XMG453316	25	16	1"	M45x1,5	33,50	37,2	92,2	33,50	46
XMG453324	32	20	1 1/4"	M45x1,5	33,50	38,2	99,2	33,50	46

**BEF**

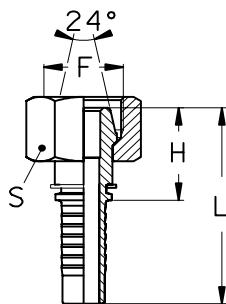
**STRAIGHT STANDPIPE - FRENCH TYPE**  
**STANDPIJP - FRANSE SERIE**



TIEFFE Part. N.	Hose I.D. Ø interno tubo			E	Dimensions (mm)			
	DN	Size	Inch	mm	H	L	M	
XFZ1304	6	04	1/4"	13,25	29,5	58,0	22	
XFZ1305	8	05	5/16"	13,25	29,5	58,0	22	
XFZ1306	10	06	3/8"	13,25	29,5	60,0	22	
XFZ1706	10	06	3/8"	16,75	31,5	62,0	24	
XFZ1708	12	08	1/2"	16,75	32,5	65,5	24	
XFZ2108	12	08	1/2"	21,25	34,5	67,5	26	
XFZ2110	16	10	5/8"	21,25	34,5	70,5	26	
XFZ2112	20	12	3/4"	21,25	35,3	76,3	26	
XFZ2712	20	12	3/4"	26,75	34,3	75,3	25	
XFZ3316	25	16	1"	33,5	37,3	92,3	27	
XFZ3320	32	20	1 1/4"	33,5	38,0	99,0	27	

**DKF**

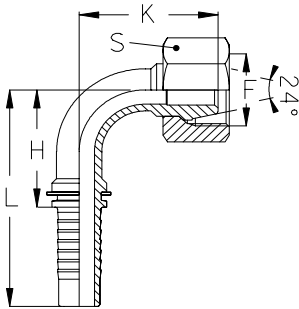
**METRIC FEMALE - 24° CONE - LOOSE NUT - FRENCH TYPE**  
**METRISCHE SLANGKOPPELING 24° CONUS - FRANSE SERIE**



TIEFFE Part. N.	Hose I.D. Ø interno tubo			Thread Filetto	Tube	Dimensions (mm)			
	DN	Size	Inch	F	mm	H	L	S	
XFG201304	6	04	1/4"	M20x1,5	13,25	23,8	52,3	24	
XFG201305	8	05	5/16"	M20x1,5	13,25	23,8	52,3	24	
XFG201306	10	06	3/8"	M20x1,5	13,25	23,8	54,3	24	
XFG241706	10	06	3/8"	M24x1,5	16,75	27	57,5	30	
XFG241708	12	08	1/2"	M24x1,5	16,75	27,3	60,3	30	
XFG302108	12	08	1/2"	M30x1,5	21,25	30	63	36	
XFG302110	16	10	5/8"	M30x1,5	21,25	30	66	36	
XFG302112	20	12	3/4"	M30x1,5	21,25	30,6	71,6	36	
XFG362712	20	12	3/4"	M36x1,5	26,75	33,6	74,5	41	
XFG453316	25	16	1"	M45x1,5	33,50	33,9	88,9	50	
XFG453320	32	20	1 1/4"	M45x1,5	33,50	34,5	95,5	50	

**DKF90**

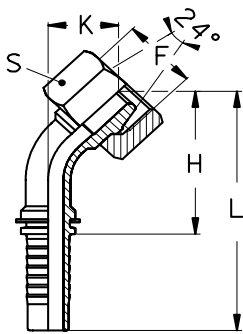
**90° METRIC SWEPT ELBOW - 24° CONE - ONE PIECE - LOOSE NUT - FRENCH TYPE**  
**BOCHT 90° METRISCH - CONUS 24° - 1 STUK - LOSSE MOER - FRANSE SERIE**



TIEFFE Part. N.	Hose I.D. Ø interno tubo			Thread Filetto	Tube	Dimensions (mm)				
	DN	Size	Inch	F	mm	H	L	K	S	
	XFG90201304	6	04	1/4"	M20x1,5	13,25	24,0	53	31,00	24
XFG90201305	8	05	5/16"	M20x1,5	13,25	31,0	59	34,00	24	
XFG90201306	10	06	3/8"	M20x1,5	13,25	34,0	64	35,00	24	
XFG90241706	10	06	3/8"	M24x1,5	16,75	34,0	64	37,00	30	
XFG90241708	12	08	1/2"	M24x1,5	16,75	41,0	74	42,00	30	
XFG90302108	12	08	1/2"	M30x1,5	21,25	39,0	72	47,30	36	
XFG90302110	16	10	5/8"	M30x1,5	21,25	49,7	85,7	51,00	36	
XFG90302112	20	12	3/4"	M30x1,5	21,25	54,9	95,9	59,00	36	
XFG90362712	20	12	3/4"	M36x1,5	26,75	55,3	96,5	61,30	41	
XFG90453316	25	16	1"	M45x1,5	33,50	54,0	109	75,40	50	
XFG90453320	32	20	1 1/4"	M45x1,5	33,50				50	

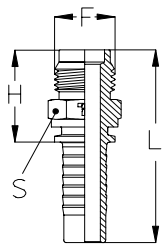
**DKF45**

**45° METRIC SWEPT ELBOW - 24° CONE - ONE PIECE - LOOSE NUT - FRENCH TYPE**  
**BOCHT 45° METRISCH - CONUS 24° - 1 STUK - LOSSE MOER - FRANSE SERIE**

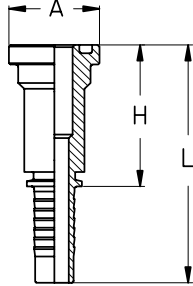


TIEFFE Part. N.	Hose I.D. Ø interno tubo			E	Tube	Dimensions (mm)				
	DN	Size	Inch	mm	mm	H	L	K	S	
	XFG45201304	6	04	1/4"	M20x1,5	13,25	41,5	70,0	21,3	24
XFG45201305	8	05	5/16"	M20x1,5	13,25	48,6	77,2	21,5	24	
XFG45201306	10	06	3/8"	M20x1,5	13,25	54,3	84,7	21,9	24	
XFG45241706	10	06	3/8"	M24x1,5	16,75				30	
XFG45241708	12	08	1/2"	M24x1,5	16,75	65,0	97,7	23,8	30	
XFG45302108	12	08	1/2"	M30x1,5	21,25				36	
XFG45302110	16	10	5/8"	M30x1,5	21,25	76,5	112,6	30,5	36	
XFG45302112	20	12	3/4"	M30x1,5	21,25	86,7	127,7	31,8	36	
XFG45362712	20	12	3/4"	M36x1,5	26,75	90,4	131,4	36,7	41	
XFG45453316	25	16	1"	M45x1,5	33,50	113,3	168,2	45,5	50	
XFG45453320	32	20	1 1/4"	M45x1,5	33,50				50	

**METRIC MALE FOR AGRICULTUR COUPLINGS**  
**METRISCHE BU.DR. KOPPELING VOOR LANDBOUW KOPPELINGEN**



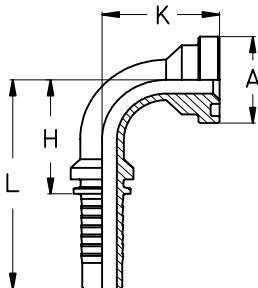
TIEFFE Part. N.	Hose I.D. Ø interno tubo			Thread Filetto	Dimensions (mm)				
	DN	Size	Inch	F	H	L	S		
	XM1805	8	05	5/16"	M18x1,5	29,3	57,8	19	
XM1806	10	06	3/8"	M18x1,5	29,3	59,8	19		
XM1808	12	08	1/2"	M18x1,5	30,3	63,3	19		



\* Straight Komatsu Flange  
 Flangia Diritta Komatsu

**SFL**
**STRAIGHT SAE J518 FLANGE - 3000 PSI - ONE PIECE**  
**RECHTE FLENS SAE J518 - 3000 PSI - UIT 1 STUK**

TIEFFE Part. N.	Hose I.D. Ø interno tubo			Flange Flangia Inch	Dimensions (mm)				Maximum WP bar
	DN	Size	Inch		H	L	A		
X30808B	12	08	1/2"	1/2"	48,5	81,5	30,2		350
X31208B	12	08	1/2"	3/4"	52,5	85,5	38,1		350
* X31008B	12	08	1/2"	5/8"	49,3	82,3	34,0		350
X30810B	16	10	5/8"	1/2"	46,5	82,5	30,2		350
* X31010B	16	10	5/8"	5/8"	49,3	85,3	34,0		350
X31210B	16	10	5/8"	3/4"	52,5	88,5	38,1		350
X30812B	20	12	3/4"	1/2"	36,0	77,0	30,2		350
X31212B	20	12	3/4"	3/4"	53,5	94,5	38,1		350
X31612B	20	12	3/4"	1"	59,5	100,5	44,5		350
X31216B	25	16	1"	3/4"	61,0	116,0	38,1		280
X31616B	25	16	1"	1"	60,5	115,5	44,5		280
X32016B	25	16	1"	1 1/4"	65,0	120,0	50,8		280
X31620B	32	20	1 1/4"	1"	61,0	122,0	44,5		210
X32020B	32	20	1 1/4"	1 1/4"	65,5	126,5	50,8		210
X32420B	32	20	1 1/4"	1 1/2"	70,0	130,0	60,3		210
X32424B	40	24	1 1/2"	1 1/2"	70,5	141,0	60,3		185
X33224B	40	24	1 1/2"	2"	77,5	147,5	71,4		185
X33232B	50	32	2"	2"	77,0	153,0	71,4		170
X34032B	50	32	2"	2 1/2"	77,5	153,5	84,1		170

**SFL90**
**90° SAE J518 FLANGE - 3000 PSI - ONE PIECE**  
**FLANGIA 90° SAE J518 - 3000 PSI - INTERA**


\* 90° Komatsu Flange  
 Flangia 90° Komatsu

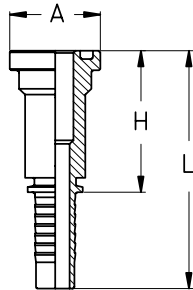
TIEFFE Part. N.	Hose I.D. Ø interno tubo			Flange Flangia Inch	Dimensions (mm)				Maximum WP bar
	DN	Size	Inch		H	L	K	A	
X3900808B	12	08	1/2"	1/2"	41	74	42	30,2	350
X3901208B	12	08	1/2"	3/4"	41	74	47	38,1	350
* X3901008B	12	08	1/2"	5/8"	41	74	44	34,0	350
X3901008B	16	10	5/8"	1/2"	49	85	46	30,2	350
* X3901010B	16	10	5/8"	5/8"	49	85	49	34,0	350
X3901210B	16	10	5/8"	3/4"	49	85	52	38,1	350
X3900812B	20	12	3/4"	1/2"	58	99	51	30,2	350
X3901212B	20	12	3/4"	3/4"	58	99	57	38,1	350
X3901612B	20	12	3/4"	1"	58	99	62	44,5	350
X3901216B	25	16	1"	3/4"	74	129	69	38,1	280
X3901616B	25	16	1"	1"	74	129	69	44,5	280
X3902016B	25	16	1"	1 1/4"	74	129	70	50,8	280
X3901620B	32	20	1 1/4"	1"	92	153	78	44,5	210
X3902020B	32	20	1 1/4"	1 1/4"	92	153	87	50,8	210
X3902420B	32	20	1 1/4"	1 1/2"	92	153	88	60,3	210
X3902424B	40	24	1 1/2"	1 1/2"	108	179	101	60,3	185
X3903224B	40	24	1 1/2"	2"	108	179	104	71,4	185
X3903232B	50	32	2"	2"	142	218	134	71,4	170
X3904032B	50	32	2"	2 1/2"	142	218	143	84,1	170





**SFS**

**STRAIGHT SAE J518 FLANGE - 6000 PSI - ONE PIECE**  
**RECHTE FLENS SAE J518 - 6000 PSI - UIT 1 STUK**

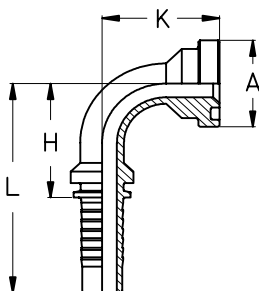


TIEFFE Part. N.	Hose I.D. Ø interno tubo			Flange Flangia Inch	Dimensions (mm)				Maximum WP bar
	DN	Size	Inch		H	L	A		
X60808B	12	08	1/2"	1/2"	49,5	82,5	31,7		415
X61208B	12	08	1/2"	3/4"	52,5	89,0	41,3		415
X60810B	16	10	5/8"	1/2"	53,0	89,0	31,7		350
X61210B	16	10	5/8"	3/4"	59,5	95,5	41,3		350
X60812B	20	12	3/4"	1/2"	45,5	86,5	31,7		350
X61212B	20	12	3/4"	3/4"	60,0	101,0	41,3		350
X61612B	20	12	3/4"	1"	62,5	103,5	47,6		350
X61216B	25	16	1"	3/4"	61,0	116,0	41,3		280
X61616B	25	16	1"	1"	66,5	121,5	47,6		280
X62016B	25	16	1"	1 1/4"	70,5	125,5	54,0		280
X61620B	32	20	1 1/4"	1"	66,0	127,0	47,6		210
X62020B	32	20	1 1/4"	1 1/4"	71,0	132,0	54,0		210
X62420B	32	20	1 1/4"	1 1/2"	80,5	141,5	63,5		210
X62424B	40	24	1 1/2"	1 1/2"	81,0	151,5	63,5		185
X63224B	40	24	1 1/2"	2"	100,0	170,5	79,4		185
X63232B	50	32	2"	2"	100,0	176,0	79,4		172

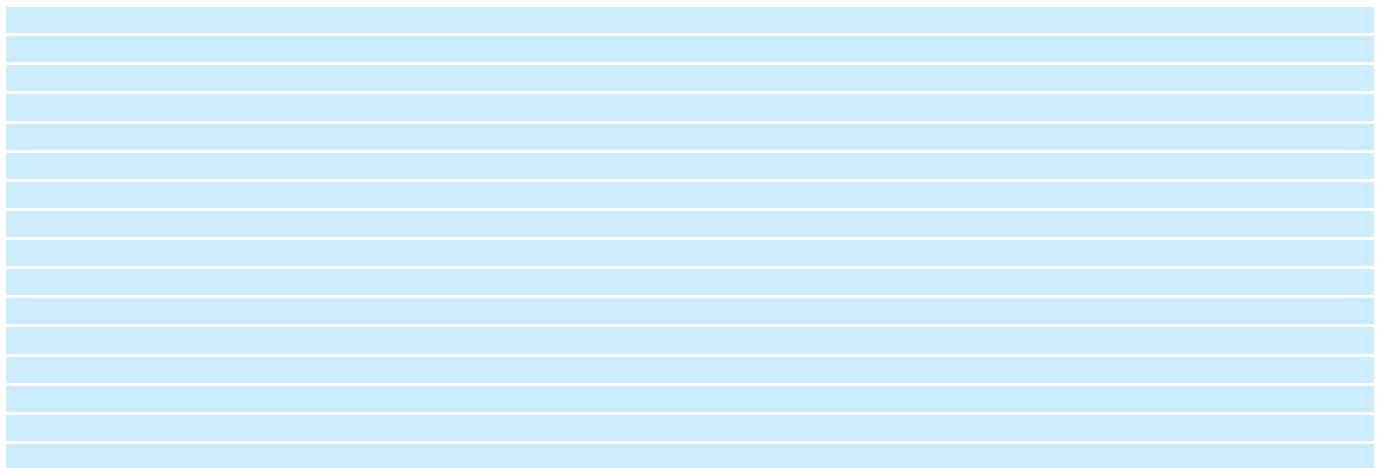


**SFS90**

**90° SAE J518 FLANGE - 6000 PSI - ONE PIECE**  
**FLENS 90° SAE J518 - 6000 PSI - UIT 1 STUK**

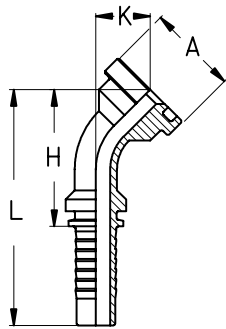


TIEFFE Part. N.	Hose I.D. Ø interno tubo			Flange Flangia Inch	Dimensions (mm)				Maximum WP bar
	DN	Size	Inch		H	L	K	A	
X6900808B	12	08	1/2"	1/2"	41	74	42	31,7	415
X6901208B	12	08	1/2"	3/4"	41	74	50	41,3	415
X6900810B	16	10	5/8"	1/2"	49	85	47	31,7	350
X6901210B	16	10	5/8"	3/4"	49	85	55	41,3	350
X6900812B	20	12	3/4"	1/2"	58	99	52	31,7	350
X6901212B	20	12	3/4"	3/4"	58	99	62	41,3	350
X6901612B	20	12	3/4"	1"	58	99	70	47,6	350
X6901216B	25	16	1"	3/4"	74	129	70	41,3	280
X6901616B	25	16	1"	1"	74	129	75	47,6	280
X6902016B	25	16	1"	1 1/4"	74	129	82	54,0	280
X6901620B	32	20	1 1/4"	1"	92	153	84	47,6	210
X6902020B	32	20	1 1/4"	1 1/4"	92	153	90	54,0	210
X6902420B	32	20	1 1/4"	1 1/2"	92	153	96	63,5	210
X6902424B	40	24	1 1/2"	1 1/2"	108	179	102	63,5	185
X6903224B	40	24	1 1/2"	2"	108	179	118	79,4	185
X6903232B	50	32	2"	2"	142	218	137	79,4	172



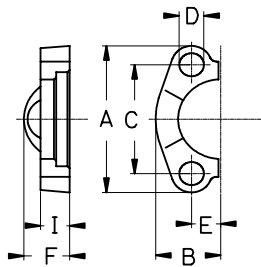
**SFS45**

**45° SAE J518 FLANGE - 6000 PSI - ONE PIECE**  
**FLENS 45° SAE J518 - 6000 PSI - UIT 1 STUK**



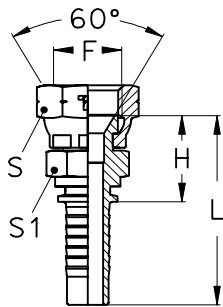
TIEFFE Part. N.	Hose I.D. Ø interno tubo			Flange Flangia Inch	Dimensions (mm)				Maximum WP bar
	DN	Size	Inch		H	L	K	A	
	X6450808B	12	08		1/2"	1/2"	63,0	96,0	
X6451208B	12	08	1/2"	3/4"	68,5	101,5	29,0	41,3	415
X6450810B	16	10	5/8"	1/2"	76,0	112,0	23,5	31,7	350
X6451210B	16	10	5/8"	3/4"	81,5	117,5	29,5	41,3	350
X6450812B	20	12	3/4"	1/2"	83,0	124,0	29,5	31,7	350
X6451212B	20	12	3/4"	3/4"	89,5	130,5	36,0	41,3	350
X6451612B	20	12	3/4"	1"	95,5	136,5	41,5	47,6	350
X6451216B	25	16	1"	3/4"	108,5	163,5	40,5	41,3	280
X6451616B	25	16	1"	1"	112,0	167,0	44,0	47,6	280
X6452016B	25	16	1"	1 1/4"	116,5	171,5	48,5	54,0	280
X6451620B	32	20	1 1/4"	1"	134,0	195,0	50,5	47,6	210
X6452020B	32	20	1 1/4"	1 1/4"	138,5	200,0	55,0	54,0	210
X6452420B	32	20	1 1/4"	1 1/2"	143,0	203,5	59,0	63,5	210
X6452424B	40	24	1 1/2"	1 1/2"	162,5	233,0	58,5	63,5	185
X6453224B	40	24	1 1/2"	2"	166,0	244,0	70,0	79,4	185
X6453232B	50	32	2"	2"	212,5	289,0	73,5	79,4	172

**SAE J518 SPLIT FLANGE HALF - 6000 PSI**  
**FLENS HELFT SAE J518 - 6000 PSI**

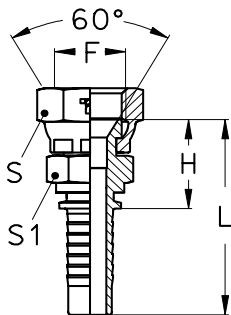


TIEFFE Part. N.	Hose I.D. Ø interno tubo			Flange Flangia Inch	Dimensions (mm)						
	DN	Size	Inch		A	B	C	D	E	F	I
	FL608					1/2"	57	24	40,5	8,75	9,1
FL612				3/4"	72	30	50,8	10,5	11,9	28	19
FL616				1"	81	35	57,2	13	13,9	32	24
FL620				1 1/4"	96	39	66,7	15	15,8	38	27
FL624				1 1/2"	113	48	79,4	17	18,3	42	30
FL632				2"	134	57	96,8	21	22,2	52	37

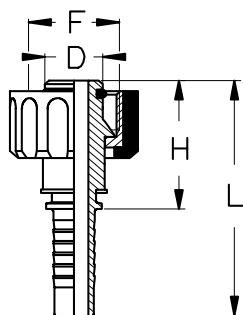


**"KOMATSU" METRIC FEMALE - 60° CONE SEAT - CRIMPED NUT**  
**METR. WARTELKOPP. "KOMATSU" - CONUS 60° - GEKROMPEN MOER**


TIEFFE Part. N.	Hose I.D. Ø interno tubo			Thread Filetto	Dimensions (mm)						
	DN	Size	Inch	F	H	L	S	S1			
XFMJ1404	6	04	1/4"	M14x1,5	24,0	52,5	19	19			
XFMJ1605	8	05	5/16"	M16x1,5	22,2	50,7	22	19			
XFMJ1406	10	06	3/8"	M14x1,5	24,0	54,5	19	19			
XFMJ1606	10	06	3/8"	M16x1,5	22,2	52,7	22	19			
XFMJ1806	10	06	3/8"	M18x1,5	24,3	54,8	24	19			
XFMJ2208	12	08	1/2"	M22x1,5	26,5	59,5	27	27			
XFMJ2408	12	08	1/2"	M24x1,5	29,9	62,9	32	32			
XFMJ2410	16	10	5/8"	M24x1,5	29,9	65,9	32	32			
XFMJ3012	20	12	3/4"	M30x1,5	33,0	74,0	36	36			
XFMJ3316	25	16	1"	M33x1,5	34,5	89,5	41	36			
XFMJ3620	32	20	1 1/4"	M36x1,5	42,6	103,6	46	46			
XFMJ4224	40	24	1 1/2"	M42x1,5	43,5	114,0	50	50			

**"TOYOTA" B.S.P. FEMALE - 60° CONE SEAT - CRIMPED NUT**  
**BSP WARTELKOPP. "TOYOTA" - CONUS 60° - GEKROMPEN MOER**


TIEFFE Part. N.	Hose I.D. Ø interno tubo			Thread Filetto	Dimensions (mm)						
	DN	Size	Inch	F	H	L	S	S1			
XBFJ0404	6	04	1/4"	1/4"	21,8	50,3	19	17			
XBFJ0606	10	06	3/8"	3/8"	22,5	53,0	22	19			
XBFJ0808	12	08	1/2"	1/2"	25,2	58,2	27	22			
XBFJ1212	20	12	3/4"	3/4"	29,7	70,7	32	27			
XBFJ1616	25	16	1"	1"	34,3	89,3	41	32			
XBFJ2020	32	20	1 1/4"	1 1/4"	37,0	98,0	50	41			
XBFJ2424	40	24	1 1/2"	1 1/2"	40,2	110,7	55	50			

**DKOK**
**WASHCLEANER FEMALE - "FK" TYPE**  
**CLEANER SLANGKOPPELING - TYPE "FK"**


TIEFFE Part. N.	Hose I.D. Ø interno tubo			Thread Filetto	Dimensions (mm)					
	DN	Size	Inch	F	H	L	D			
XKF221404	6	04	1/4"	M22x1,5	36,5	65	14			
XKF221405	8	05	5/16"	M22x1,5	36,5	65	14			
XKF221406	10	06	3/8"	M22x1,5	36,5	67	14			

